

REDC

**Business
Post**

Opinion Poll Report November 2025

JN. 761624



Methodology and Weighting

- RED C interviewed a random sample of **1,010** adults aged 18+ online between 21st – 26th November 2025.
- An online approach was used, among our bespoke online panel RED C Live.
- Interviews are conducted across the country and the results weighted to the profile of all adults.
- Panellists were chosen at random to complete the poll, with quotas set and weights allocated on age, gender, class, region, education level & working status to ensure a nationally representative sample.
- A further past vote quota is included that looks at how people on our panel voted at the last general election and controls this to ensure it is close to the actual results.
- An additional past vote weight based on how people voted in both the last local and general elections is also applied.
- Vote intention data is also weighted to take account of claimed likely turnout on the day of an election.
- In all respects the poll was completed to opinion polling guidelines set out by both ESOMAR & AIMRO.

REDC LIVE

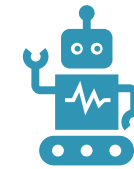
The highest online research quality standards in the industry

- Over 40,000 panellists in place – the most robust online panel in Ireland
- Both online and offline ongoing recruitment, with between 200-500 new people recruited per month on average
- Deliberate efforts are made to recruit older consumers who are generally more difficult to find.
- RED C Live has proven to hold **higher numbers of difficult to reach sample profiles including those aged 65+ vs. leading panel providers.** As such we can deliver fully nat. rep samples across all age



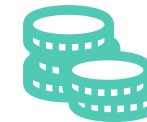
Pre-Screening

All respondents are pre-screened and invited to take part in the survey based on the information held on them in the panel.



Bot Capture

Honeytrap checks with hidden questions in the code that respondents can't see and if answered they are removed from the data.



Fair Reward

We pay respondents fair rewards of €1 per 5 mins in cash for survey completion to ensure quality attention is given.



Logic Traps

We have inbuilt logic questions and failures at these questions are rejected.



Time Delays

All surveys have in-built time delays from the appearance of questions to the presentation of response options.

RED C Live

Reviews 406 • Excellent



RED C Polling Accuracy

Closest pollster again at General Election 2024

RED C are delighted with the accuracy of our polling at the recent Irish General Election in Nov 2024. The final RED C Business Post poll had the joint best average error across all parties for our final poll, and the most accurate by far across the three main parties, correctly predicting that Fianna Fáil would have the largest vote share and that they would benefit most from transfers, and was more accurate than the exit poll.

The accuracy of our final poll conducted online vs. polls conducted face to face with larger sample sizes, confirms the ability of online polling to accurately predict elections.

The accuracy of our polls once again underlines the high quality of our research, in particular the quality controls for our online panel and the statistical controls and weighting matrices used to ensure a representative sample.

The RED C published polls in the Business Post, clearly gave the insight to the wider population very accurately from the start of the campaign. Our final poll (figure 1 below) had an average error of just 0.8% the lowest error seen across all polls, and ahead of the exit poll.

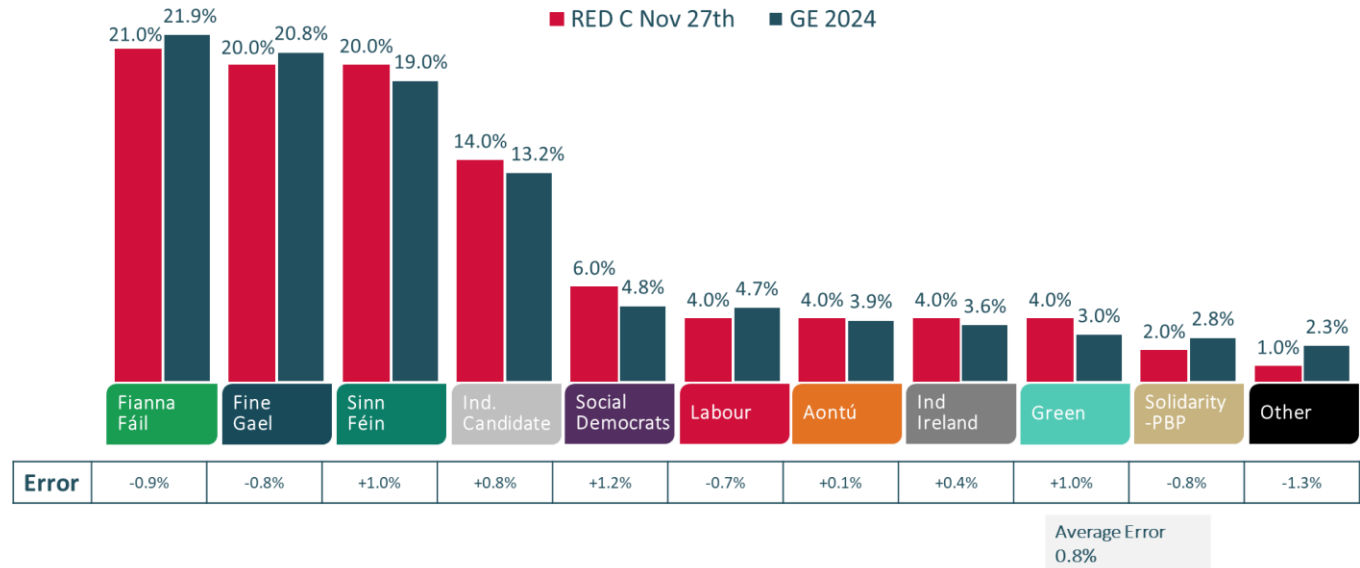
We also correctly predicted that Fianna Fáil would take the greatest vote share. In fact, our average error across the three main parties was just 0.9%. The most accurate by far across all polls conducted in the closing stages of the campaign.

RED C were also the most accurate at predicting the GE 2020 election result, using both a telephone and an online methodology

Polling is conducted on general election vote intention, and should not be compared with other second tier elections.

RED C final GE 2024 Poll had an average error of just 0.8%

Final Online Poll During GE 2024



REDC LIVE

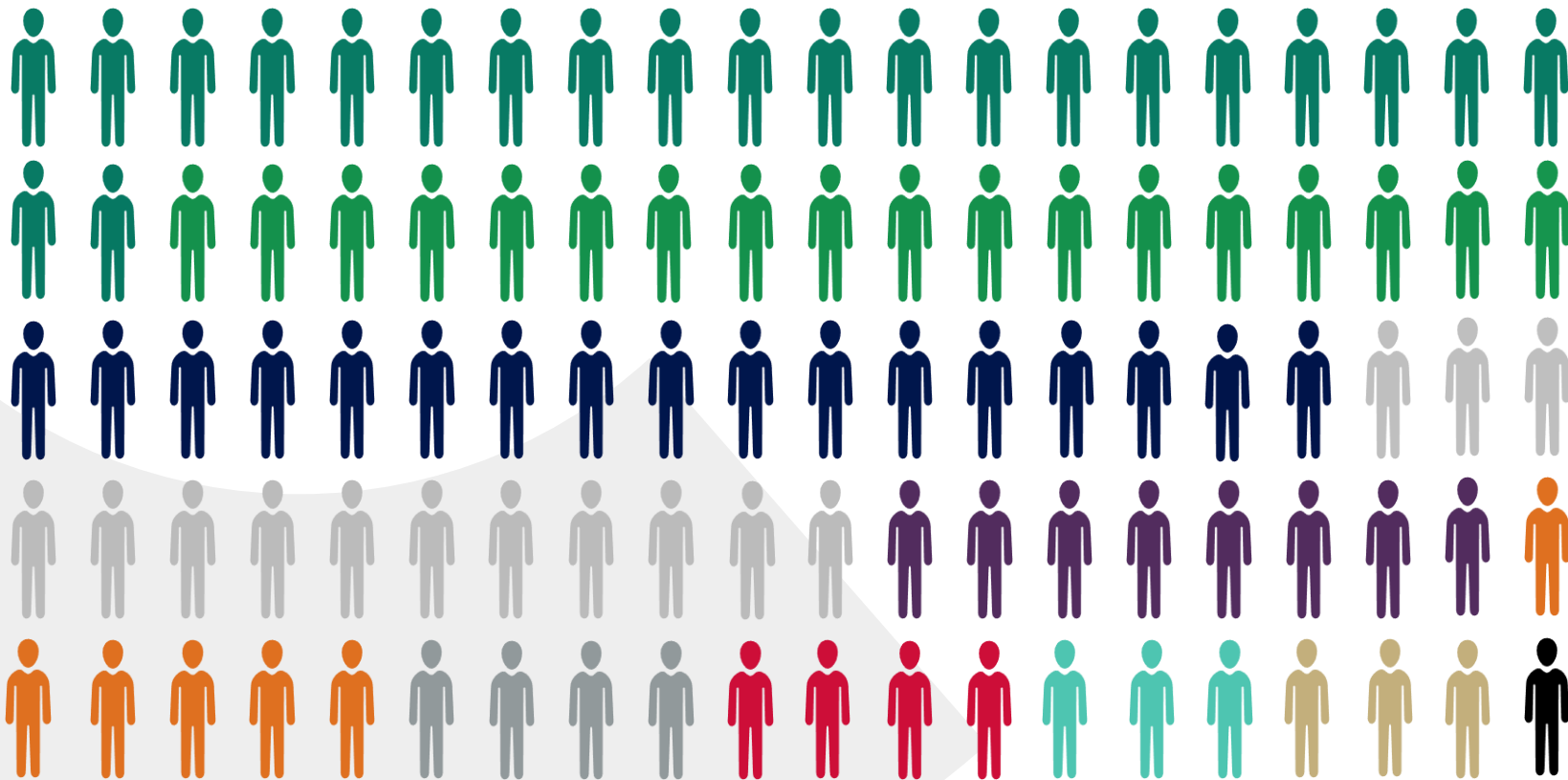


01

Vote Intention @ General Election

First preference vote intention – 30th November 2025

With change vs. Last Poll October 2025



Sinn Féin
22% -1

Fianna Fáil
18% +1

Fine Gael
17% -2

Independents
14% +2

Other Party
1% =

Undecided Voters
11%

Social Democrats
8% -1

Aontú
6% +2

Independent Ireland
4% -1

Labour
4% =

Green
3% =

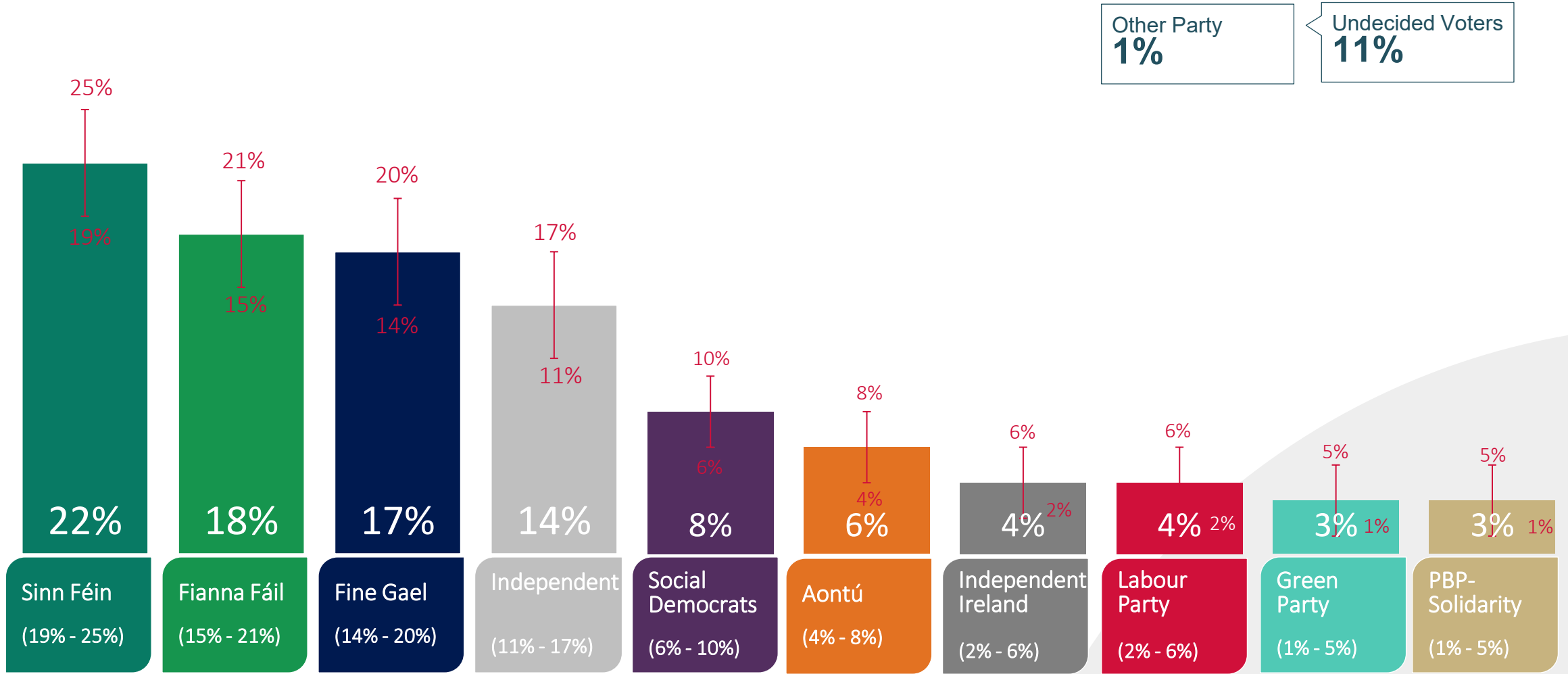
PBP-Solidarity
3% -1

Q. If the general election was tomorrow which party or independent candidate do you think you would give your first preference vote to? (Past vote weighted)

(Base: All adults 18+ who will vote)

First preference vote intention – 30th November 2025

The chart below shows the current claimed first preference party support, and also an estimate of the margin of error that should be applied to each, showing the possible range of support for each party.



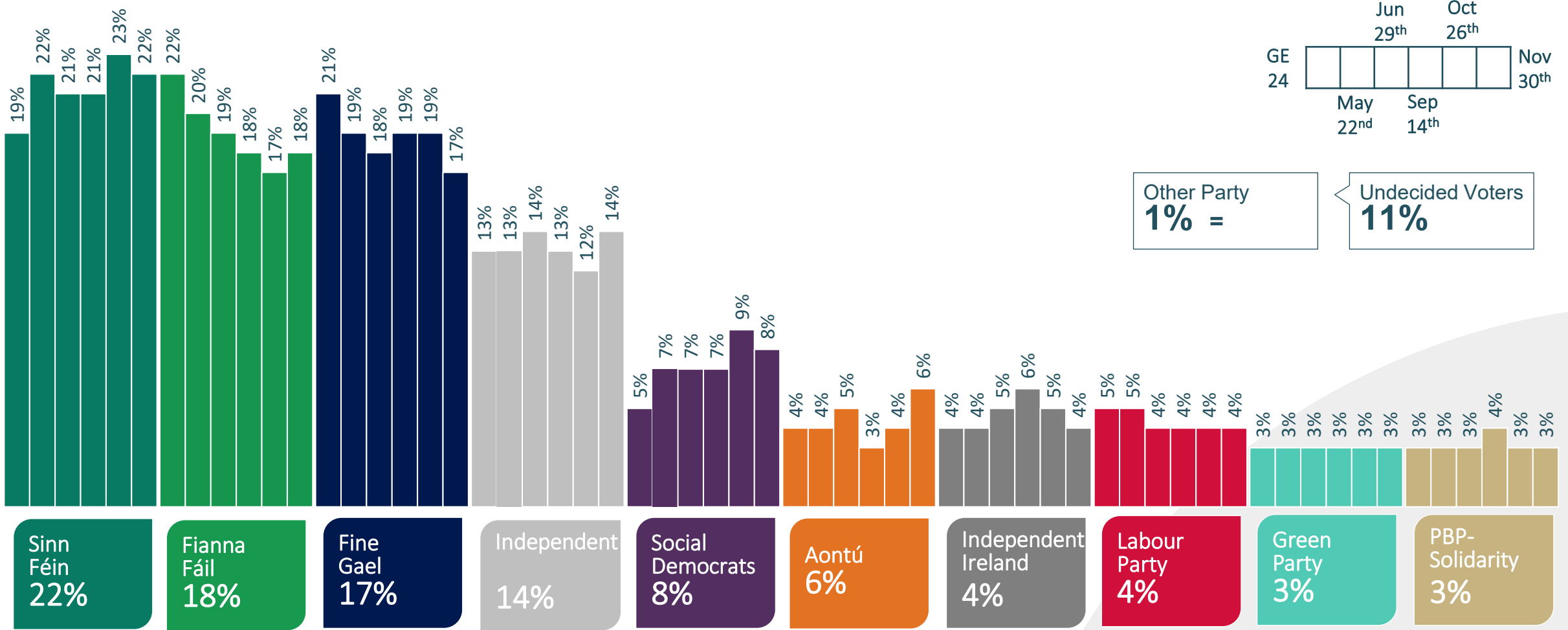
() shows the possible range of support for each party based on an estimated average margin of error calculation

Note: Margin of error for smaller parties may be smaller

Q. If the general election was tomorrow which party or independent candidate do you think you would give your first preference vote to? (Past vote weighted)
(Base: All adults 18+ who will vote)

First preference vote intention

Shown over time and vs. last General Election Results



Q. If the general election was tomorrow which party or independent candidate do you think you would give your first preference vote to? (Past vote weighted)
 (Base: All adults 18+ who will vote)

Core vote intention to turnout weighted data process

30 th November 2025	Core data	Core data with prompt for most likely party ⁽¹⁾	Undecided/ Non Voters Removed ⁽²⁾	Turnout Weighted ⁽³⁾
Sinn Féin	18%	19%	23%	22%
Fianna Fáil	13%	15%	17%	18%
Fine Gael	14%	14%	16%	17%
An Independent Candidate	11%	13%	15%	14%
Social Democrats	6%	6%	7%	8%
Aontú	5%	5%	6%	6%
Independent Ireland	3%	3%	3%	4%
Labour Party	4%	4%	4%	4%
Green Party	3%	3%	4%	3%
People Before Profit-Solidarity	3%	3%	3%	3%
Other	1%	1%	2%	1%
Would not vote	3%	3%		
Undecided	16%	11%		

Notes

1. For those that initially suggest they are undecided, we prompt with an extra question to ask which party they are most likely to vote for at this moment in time.
2. After this prompt we remove those that still say they are undecided, or would not vote, and re-proportion on those expressing a preference.
3. Turnout weighting is added based on an algorithm that combines data on how likely someone is to say they plan to vote at the next GE on a 10-point scale, and whether they actually voted at the last election (if they were eligible to do so).

First preference vote intention x demographics

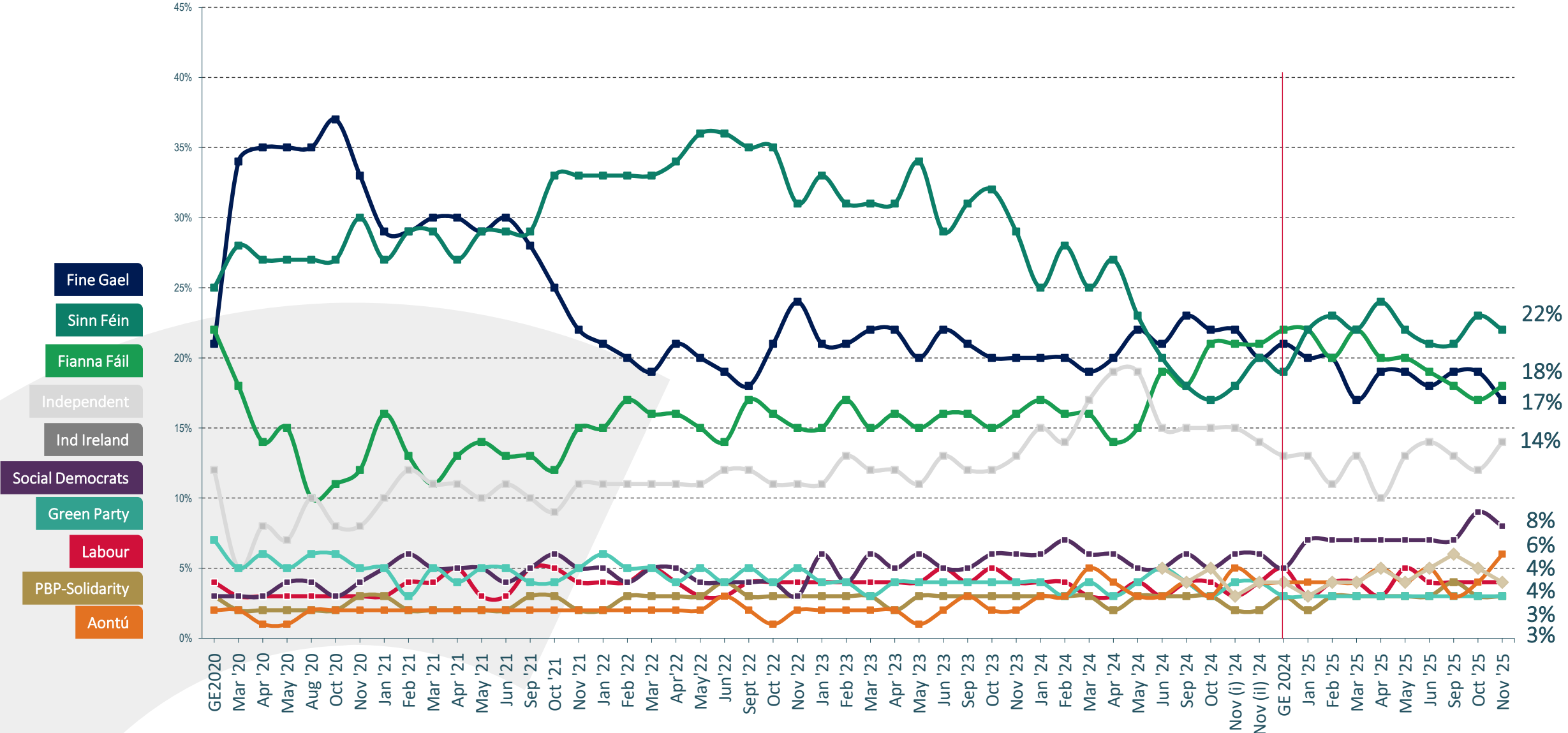
Note: Results on sub sample of the population are based on a much smaller sample size per group, and as such have a much higher margin of error. The results should therefore be treated with caution

30 th November 2025		Gender		Age			Social Class		Region			
	Total	Male	Female	18-34	35-54	55+	ABC1	C2DE	Dublin	Rest of Leinster	Munster	Conn/ Ulster
Sinn Féin	22%	20%	24%	26%	27%	15%	17%	29%	18%	27%	17%	28%
Fianna Fáil	18%	18%	18%	14%	18%	21%	21%	12%	16%	17%	25%	13%
Fine Gael	17%	18%	16%	9%	14%	25%	16%	15%	23%	18%	11%	14%
An Independent Candidate	14%	13%	15%	8%	16%	16%	10%	20%	10%	19%	14%	13%
Independent Ireland	4%	5%	2%	4%	3%	4%	3%	4%	1%	2%	5%	8%
Green Party	3%	3%	3%	8%	2%	1%	4%	3%	3%	4%	4%	0%
Labour Party	4%	6%	3%	11%	2%	2%	8%	2%	6%	2%	5%	6%
Social Democrats	8%	8%	8%	11%	7%	6%	11%	5%	9%	5%	10%	6%
People Before Profit-Solidarity	3%	2%	4%	5%	3%	2%	4%	3%	7%	2%	0%	2%
Aontú	6%	7%	5%	4%	7%	7%	6%	7%	4%	4%	9%	10%

Not Showing Other Party
(Base: All adults 18+ who will vote)

Q. If the general election was tomorrow which party or independent candidate do you think you would give your first preference vote to? (Past vote weighted)

First preference vote intention – since GE 2020



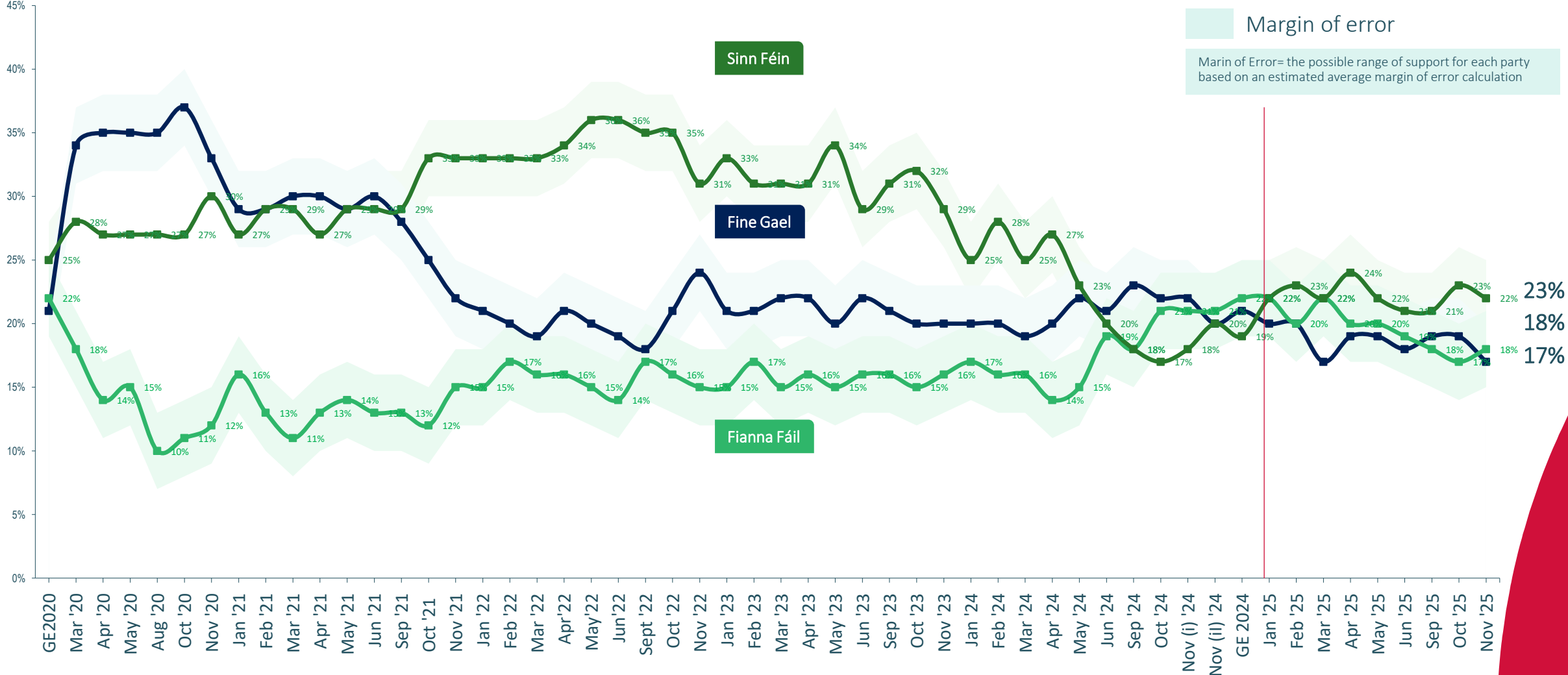
Q. If the general election was tomorrow which party or independent candidate do you think you would give your first preference vote to? (Past vote weighted)

(Base: All adults 18+ who will vote)

First preference vote intention trend over time since GE 2020



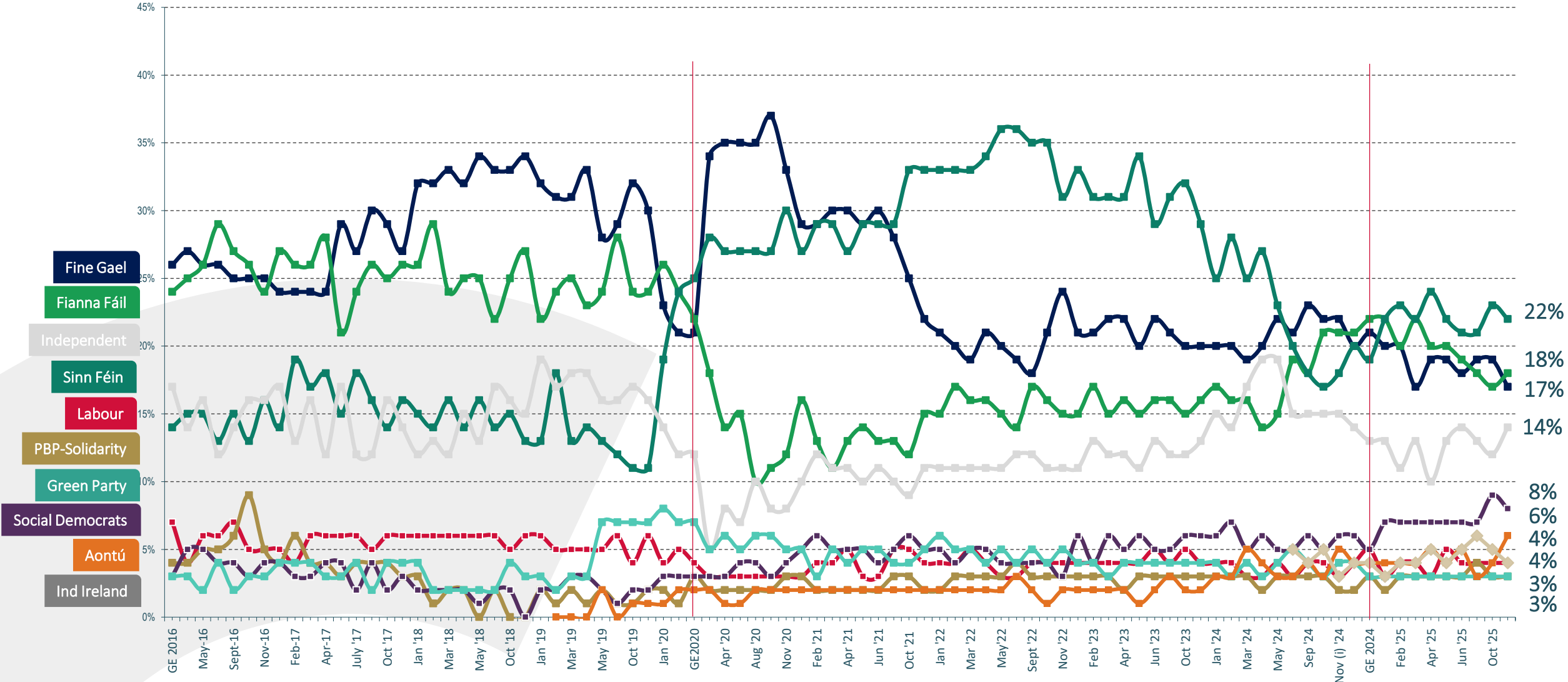
The chart below shows the current claimed first preference party support for the three largest parties, and also an estimate of the margin of error that should be applied to each, showing the possible range of support for each party.



Q. If the general election was tomorrow which party or independent candidate do you think you would give your first preference vote to? (Past vote weighted)

(Base: All adults 18+ who will vote)

First preference vote intention – since GE 2016

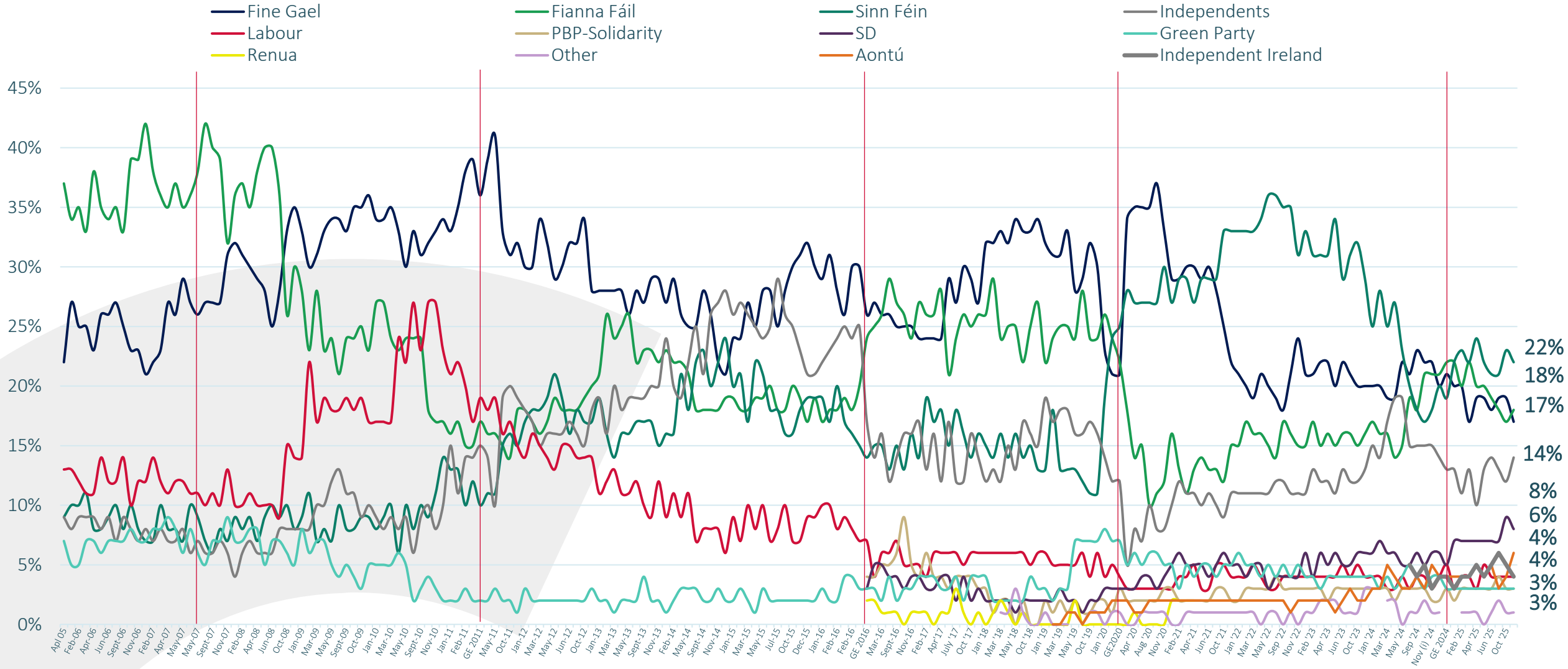


Q. If the general election was tomorrow which party or independent candidate do you think you would give your first preference vote to? (Past vote weighted)

(Base: All adults 18+ who will vote)

First preference vote intention – 2005 to 2025

Note: From GE 2016 Onwards, 'Independents/Others' split out to show PBP-Solidarity, Social Democrats, Aontú, Renua etc. separately



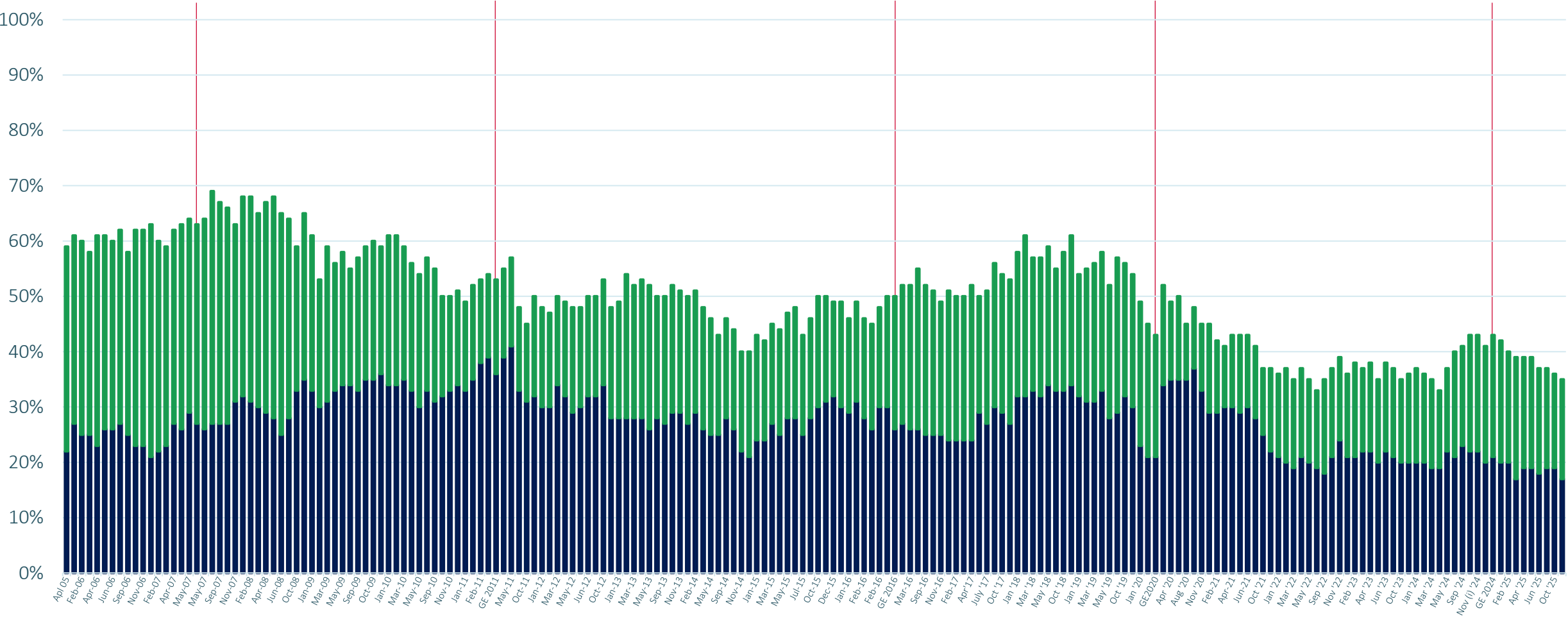
Q. If the general election was tomorrow which party or independent candidate do you think you would give your first preference vote to? (Past vote weighted)

(Base: All adults 18+ who will vote)

First preference vote intention – 2005 to 2025



■ Fine Gael ■ Fianna Fáil



Q. If the general election was tomorrow which party or independent candidate do you think you would give your first preference vote to? (Past vote weighted)

(Base: All adults 18+ who will vote)



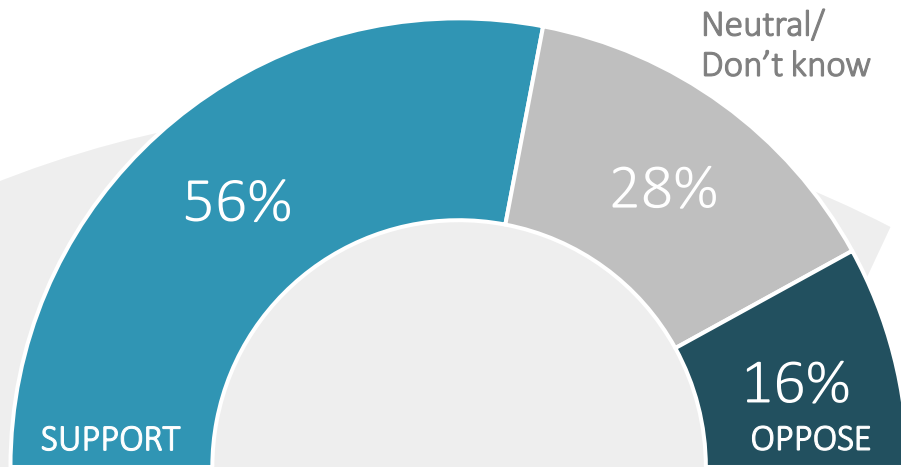
02

Views on topical political issues

Majority are in favour of emergency planning powers being evoked

The population is divided on Nato membership, with a large share of voters neutral or undecided.

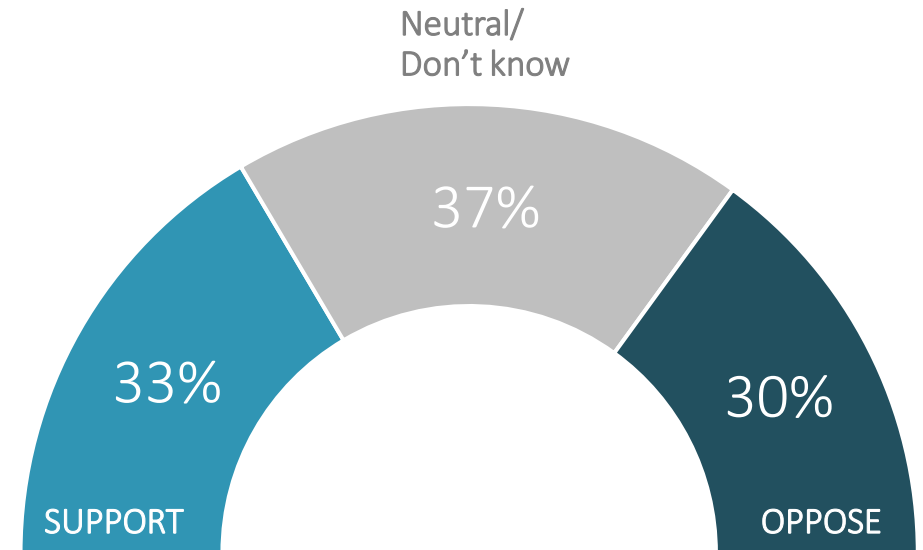
Should the government use emergency powers for key infrastructure projects?



I **support** the government proposals to use emergency powers to ensure delivery of key infrastructure projects across the country

I **oppose** the government proposals to use emergency powers to ensure delivery of key infrastructure projects across the country

Should Ireland apply for Nato?



I would **support** Ireland applying for Nato membership

I would **oppose** Ireland applying for Nato membership

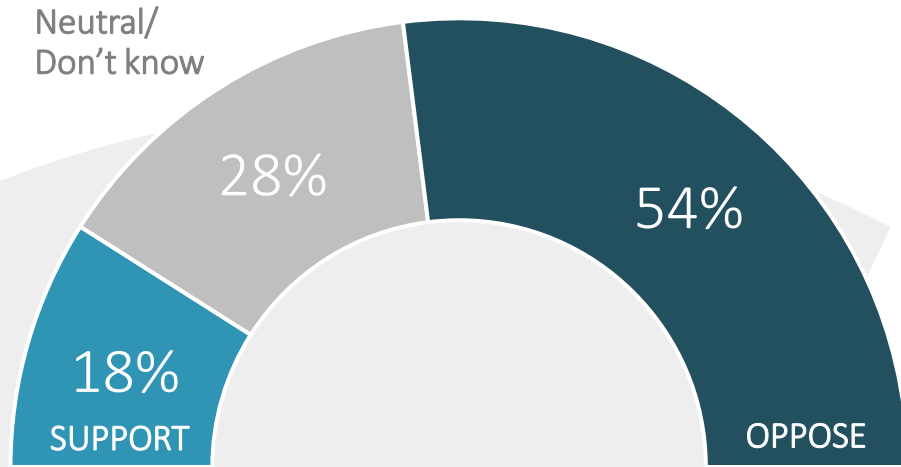
(Base: All adults 18+)

Please pick the statement that best represents your view when it comes to these topics that have been in the news recently

Most want remote hours to be retained rather than reduced **REDC**

Strong majority are in favour of recent Justice department decisions to make immigration more difficult for those coming or wanting to stay in Ireland.

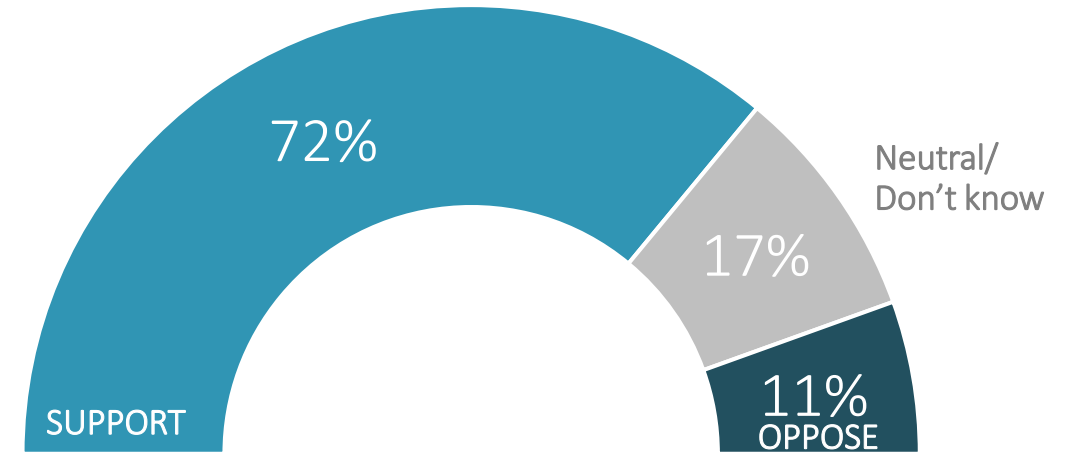
Should remote working hours be reduced?



I am in **favour of reducing** the amount of remote working practices currently used in the Irish workforce

I am in **favour of retaining** the amount of remote working practices currently used in the Irish workforce

Support for Justice Department making immigration more difficult



I **support** plans by the Justice Department to make it more difficult for migrants to come/remain in Ireland

I **oppose** plans by the Justice Department to make it more difficult for migrants to come/remain in Ireland

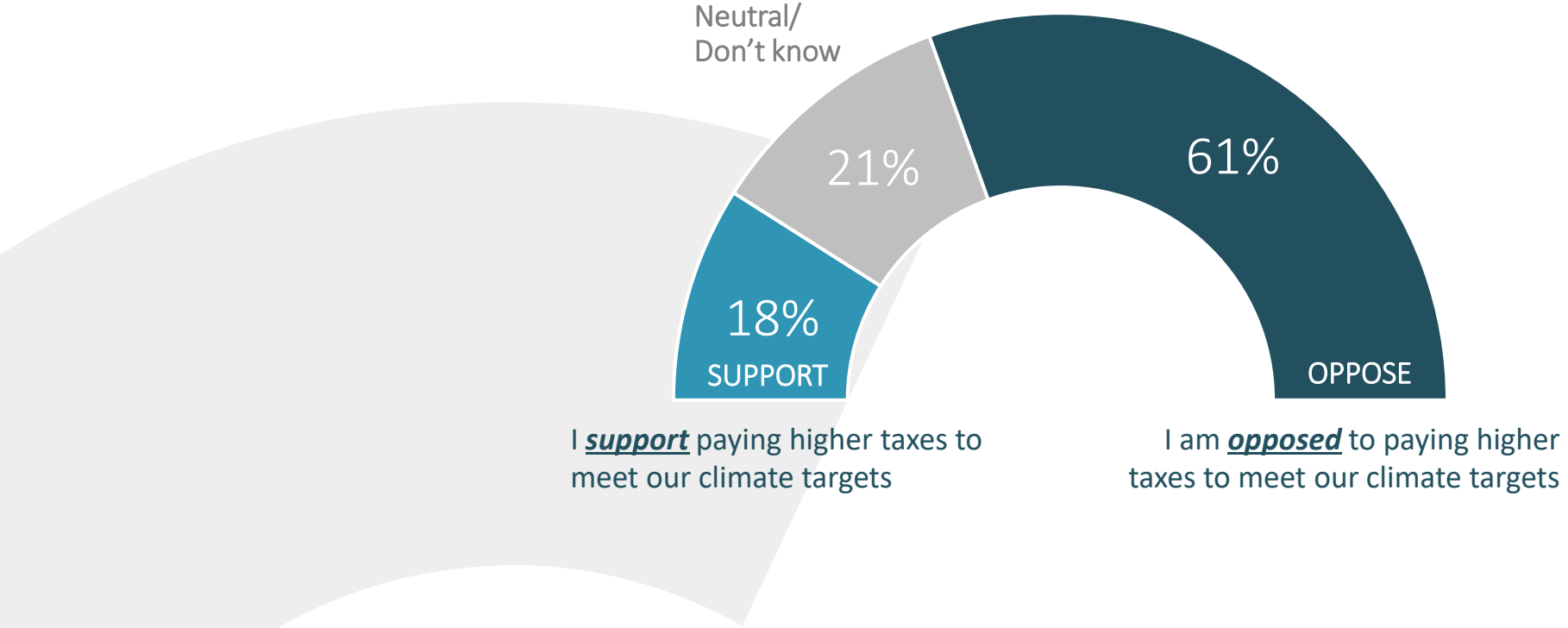
(Base: All adults 18+)

Please pick the statement that best represents your view when it comes to these topics that have been in the news recently

Irish people are predominantly opposed to paying climate tax **REDC**

Less than 1 in 5 would support taxes to help Ireland reach its EU climate targets.

Higher taxes for climate targets?



(Base: All adults 18+)

Please pick the statement that best represents your view when it comes to these topics that have been in the news recently

Majority support emergency powers for infrastructure projects **REDC**

Government supporters, ABC1s and those over the age of 55+ show the highest levels of support.

I **support** the government proposals to use emergency powers to ensure delivery of key infrastructure projects across the country

Neutral

I **oppose** the government proposals to use emergency powers to ensure delivery of key infrastructure projects across the country

Don't know

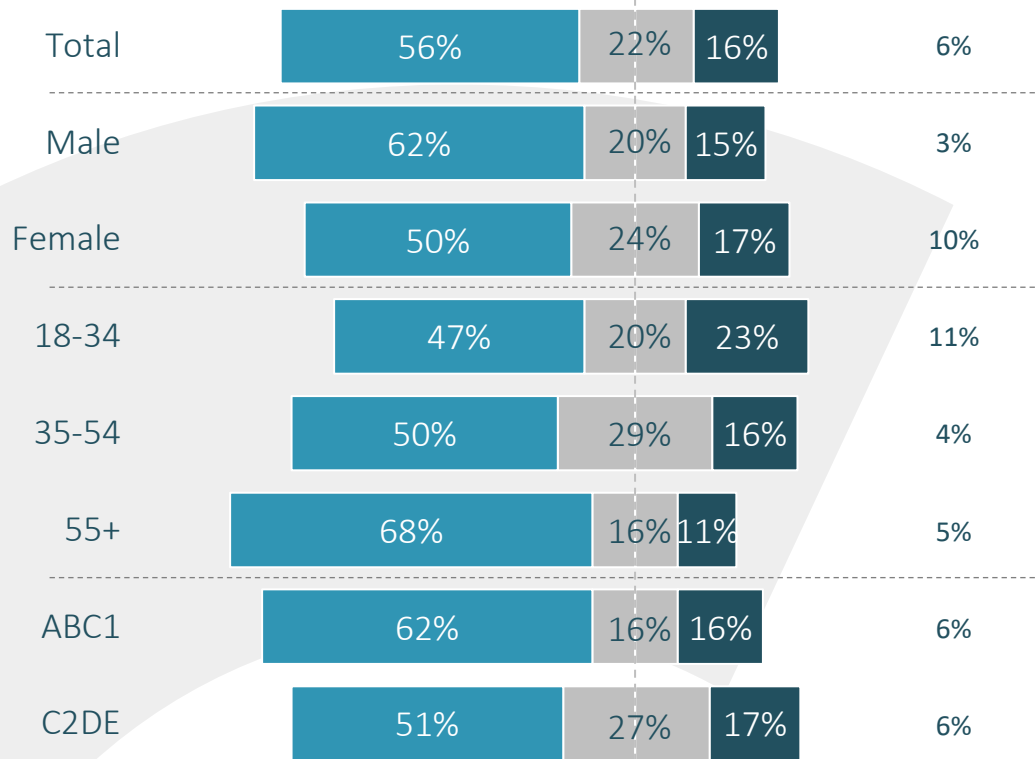
I **support** the government proposals to use emergency powers to ensure delivery of key infrastructure projects across the country

Neutral

I **oppose** the government proposals to use emergency powers to ensure delivery of key infrastructure projects across the country

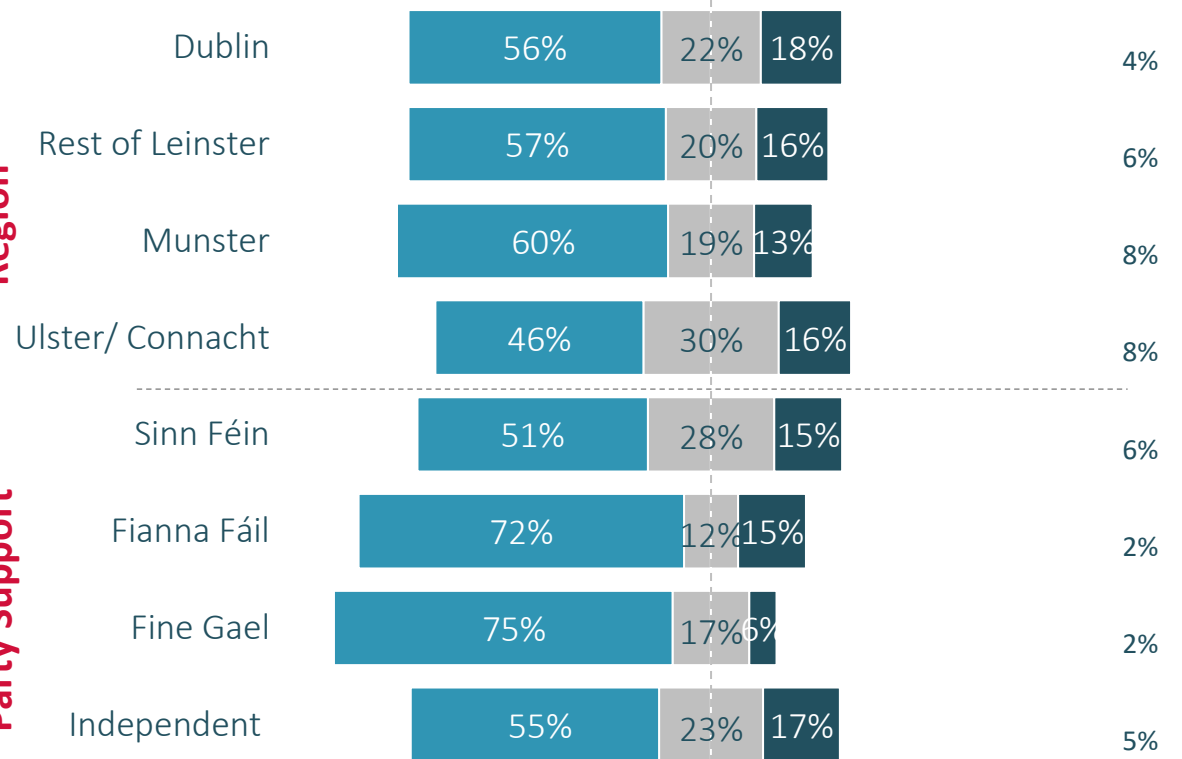
Don't know

Gender



Region

Party Support



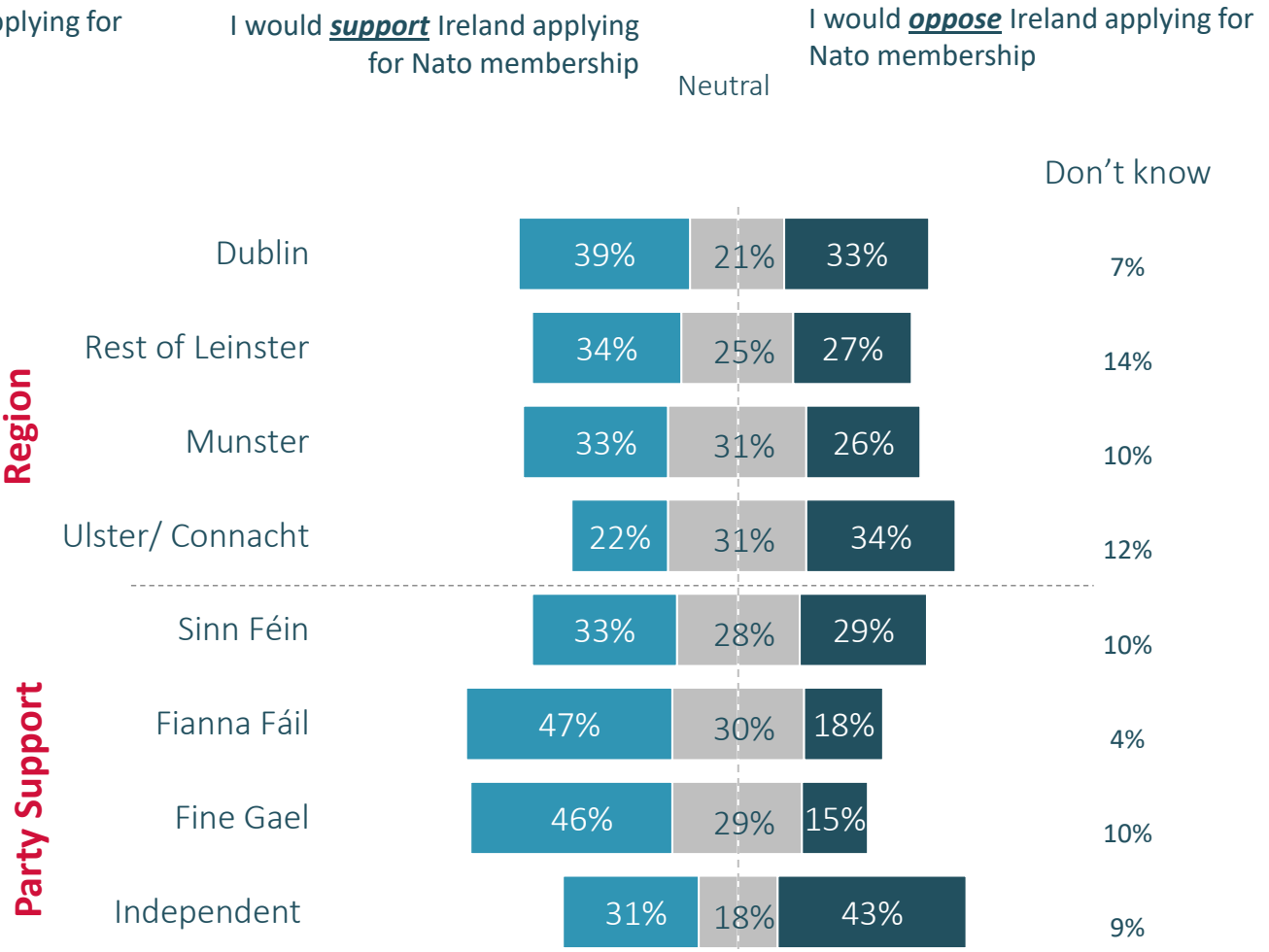
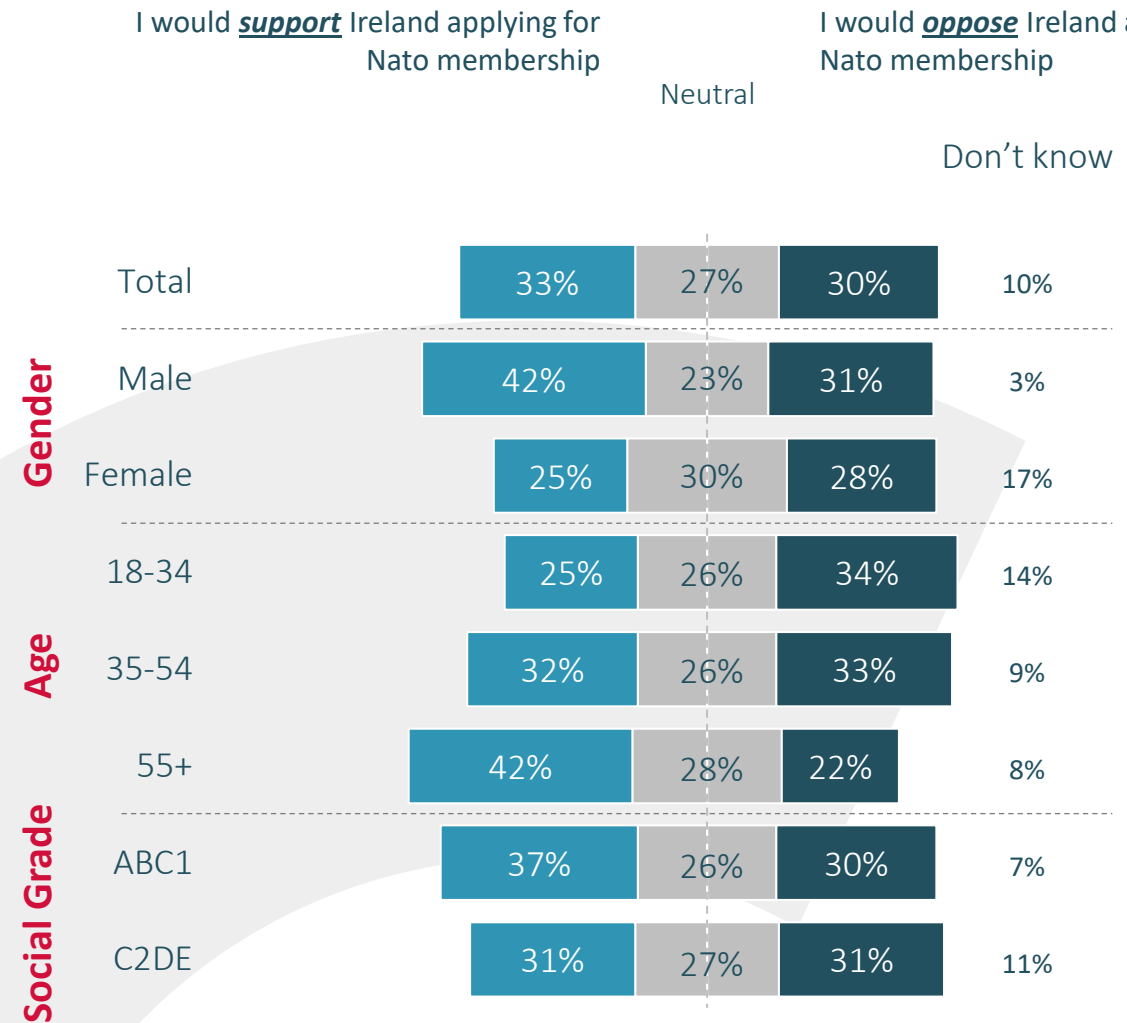
(Base: All adults 18+)

Please pick the statement that best represents your view when it comes to these topics that have been in the news recently

Government supporters are more in favour of NATO membership



The country as a whole though is divided, with no majority observed across demos or party support.

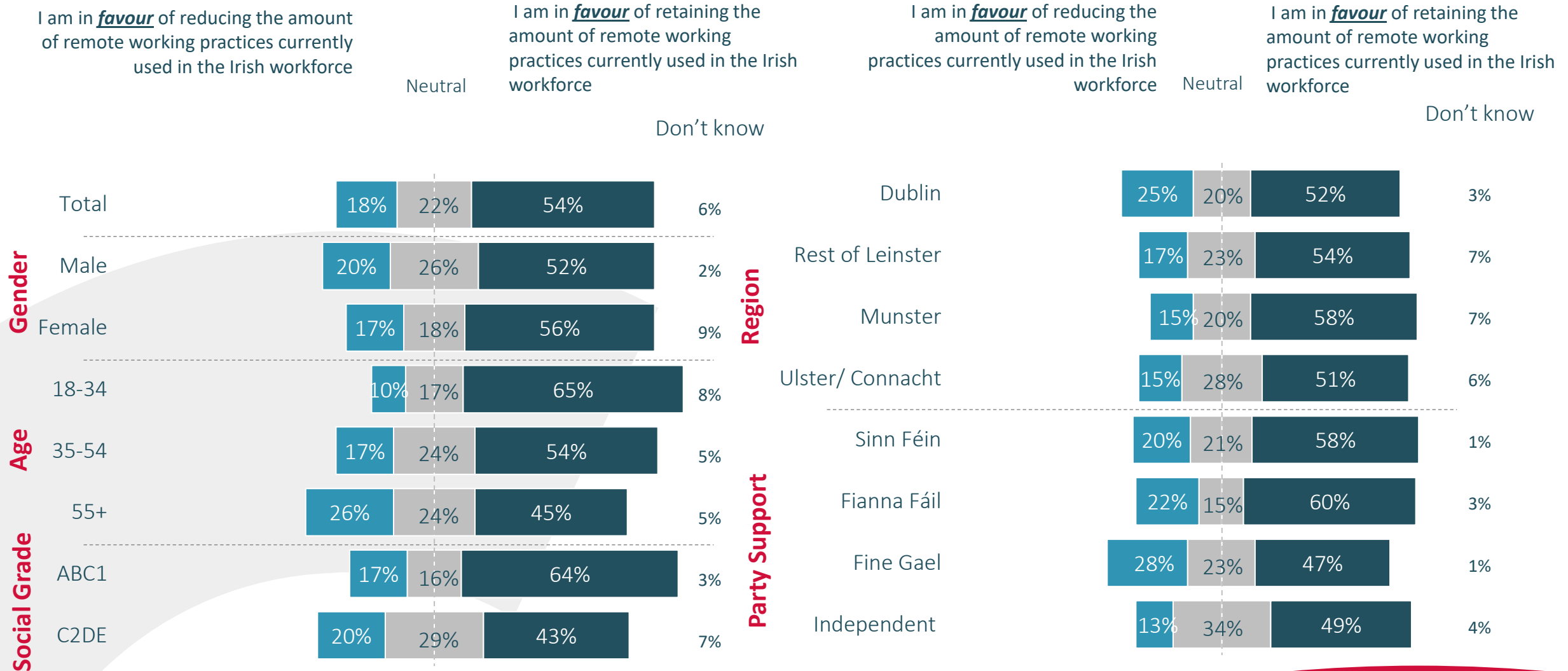


(Base: All adults 18+)

Please pick the statement that best represents your view when it comes to these topics that have been in the news recently

Strong majority want remote working to continue

Only a small minority of the population are in favour of bringing workers back to the office more regularly.



(Base: All adults 18+)

Please pick the statement that best represents your view when it comes to these topics that have been in the news recently

Strong support for the Justice Department's migration plan

Support is least pronounced among under 35s and Dublin residents, though still high.

I **support** plans by the Justice Department to make it more difficult for migrants to come/remain in Ireland

Neutral

I **oppose** plans by the Justice Department to make it more difficult for migrants to come/remain in Ireland

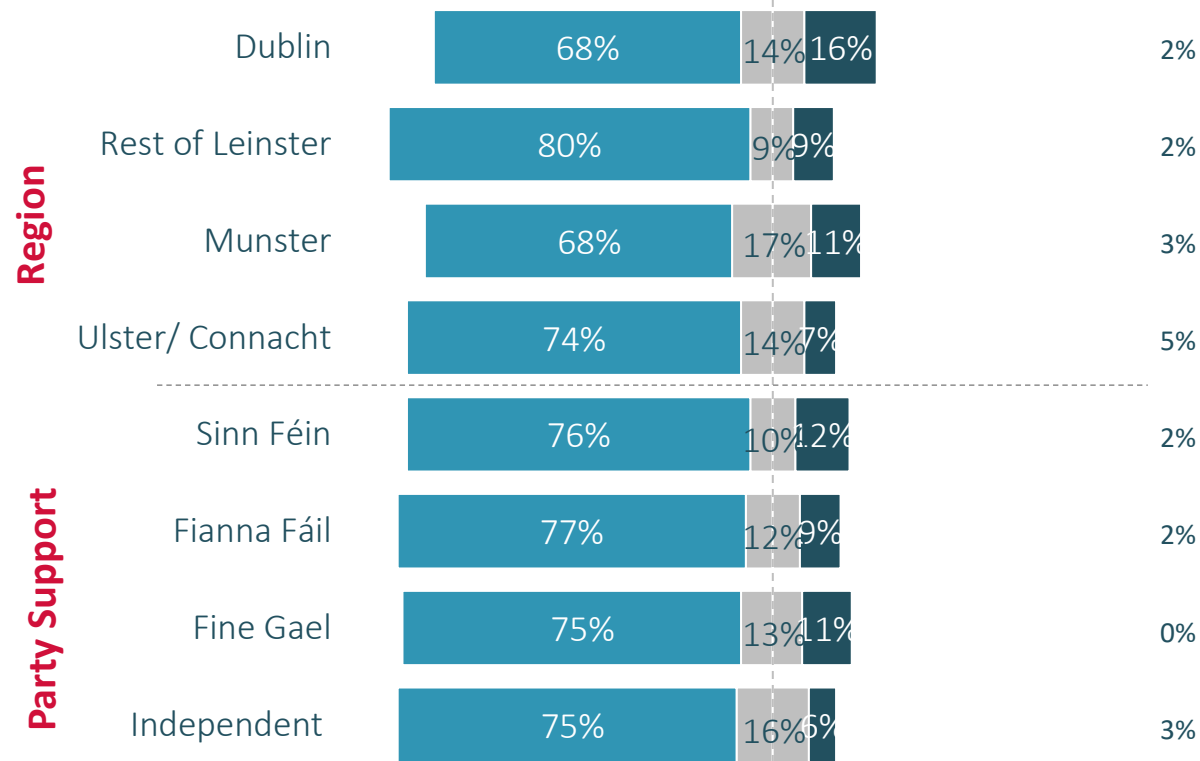
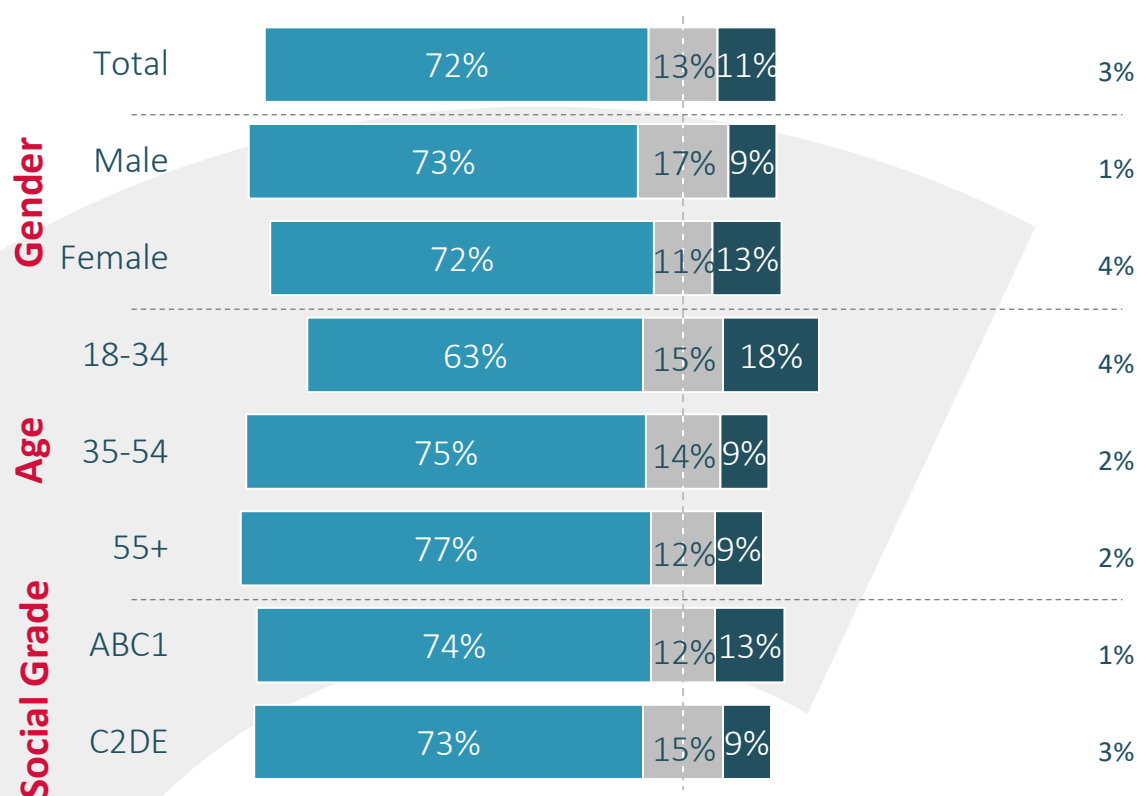
I **support** plans by the Justice Department to make it more difficult for migrants to come/remain in Ireland

Neutral

I **oppose** plans by the Justice Department to make it more difficult for migrants to come/remain in Ireland

Don't know

Don't know

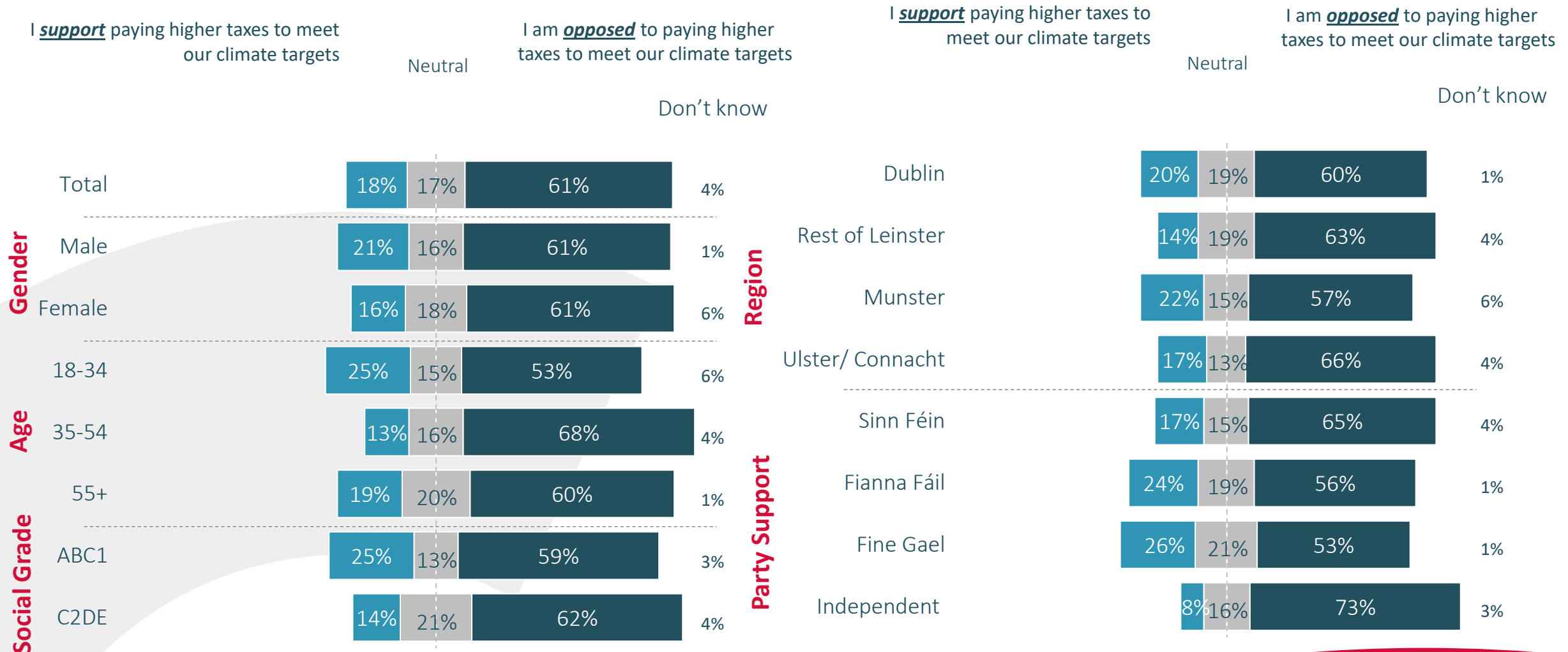


(Base: All adults 18+)

Please pick the statement that best represents your view when it comes to these topics that have been in the news recently

Majority oppose increased tax for the sake of climate targets **REDC**

Young people and those in the ABC1 social grade are more willing to pay higher taxes, with government supporters also more in favour of higher taxes compared to SF voters.



(Base: All adults 18+)

Please pick the statement that best represents your view when it comes to these topics that have been in the news recently



03

About RED C

RED C Group conduct research worldwide from Dublin & London



The RED C Research Group is made up of the RED C and Relish brands, with support from our partners in WIN.



RED C Ireland

Our founding agency is the largest independent market research agency in the Republic of Ireland with a staff of close to 50



RED C UK

Our fast-growing UK agency, that specialises in international qualitative and quantitative research in the media, sports and kids industries



Relish Research

Our newly acquired UK based research business, that specialises in understanding customers and helping subscription based business in the UK market



Worldwide Independent Network

Partner agencies in 35 markets across the globe help us design international projects with local market insights

We help brands grow by clearly understanding human needs and behaviour



Understanding Behaviour

We measure behaviour, needs, and attitudes to better understand opportunities and target the market



Building Brands

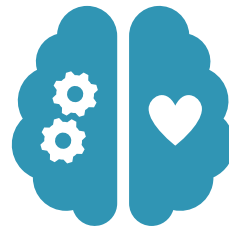
We know how to build brands, through mental availability, distinctiveness, emotional connections and differentiation.



Improving Experiences

We map customer journeys, understand pain points, and monitor moments of truth to help you delight and retain customers.

Underpinned by understanding of real human behaviour, and using a set of specially designed products



System 1



RED Star

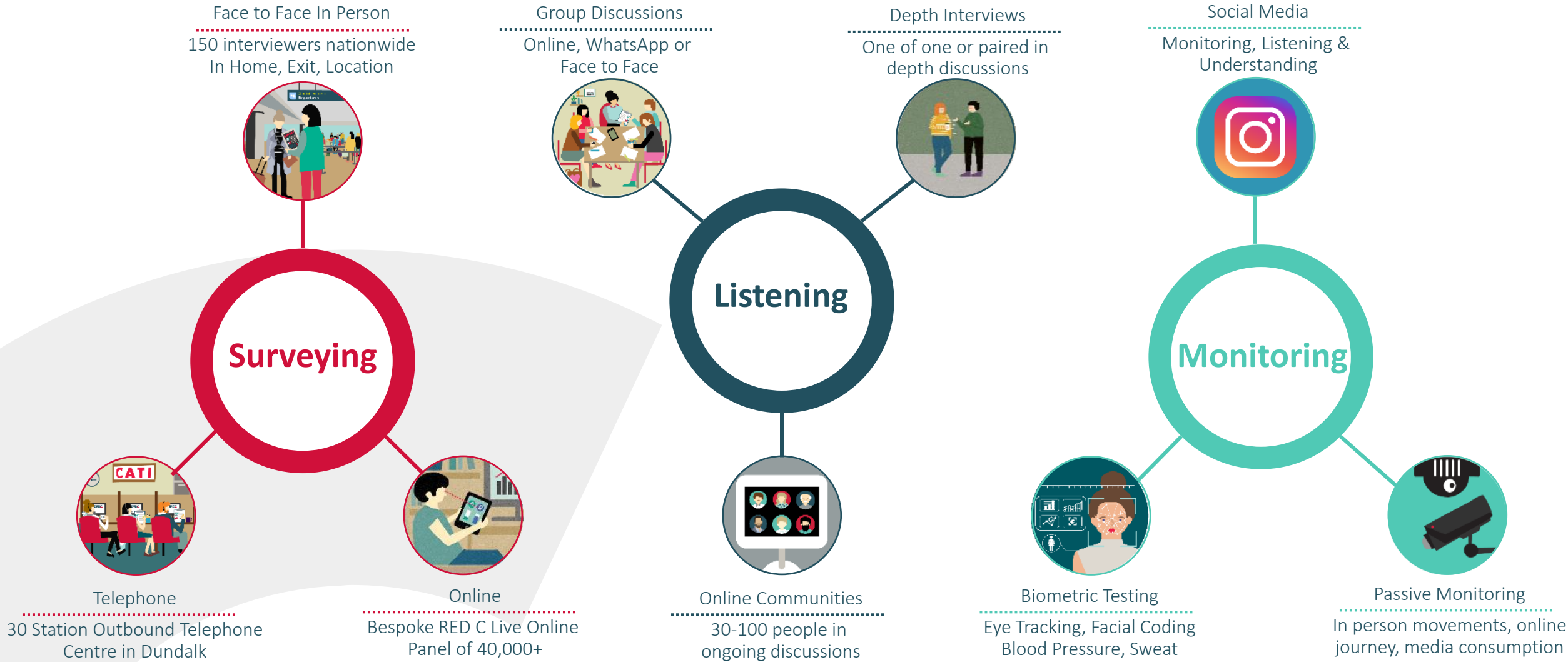
In markets across the world



RESEARCH
EVALUATION
DIRECTION
CLARITY



Using a variety of techniques to uncover & understand



RESEARCH
EVALUATION
DIRECTION
CLARITY

See More, Clearly

REDC

