



The Business Post

General Election Campaign Opinion Poll

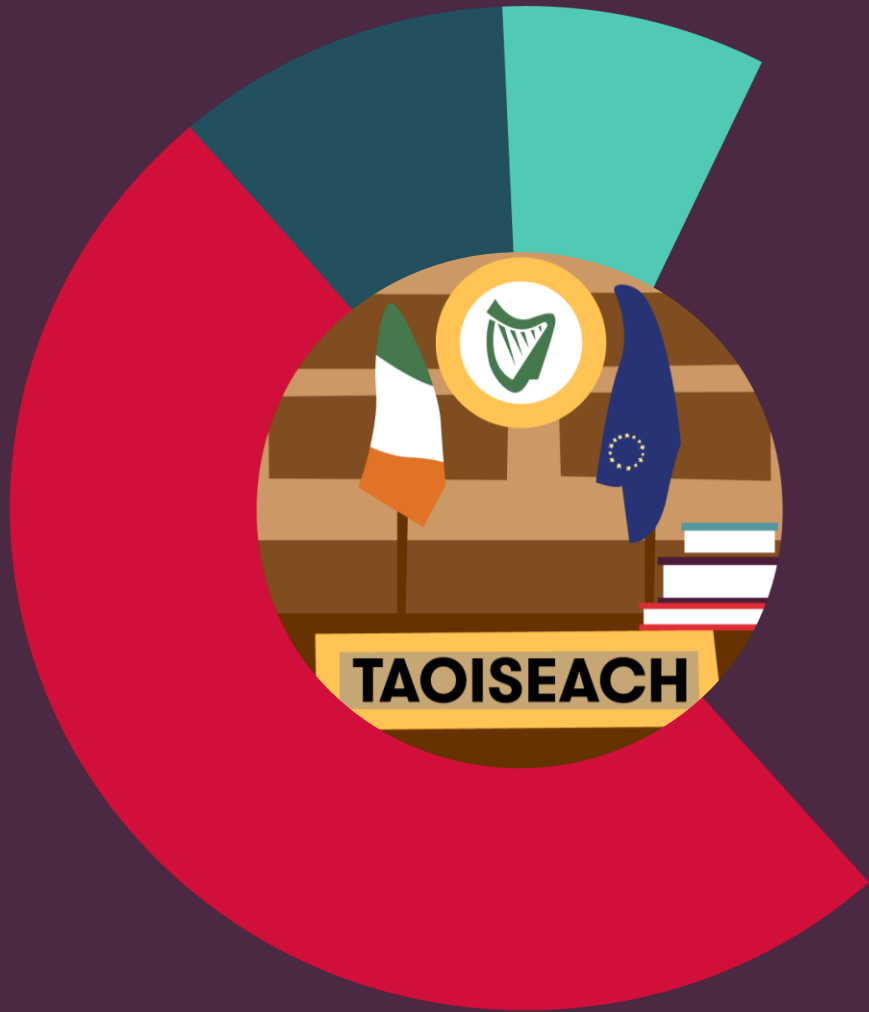
February 2020



Methodology and Weighting

- / RED C interviewed a random sample of 1000 adults aged 18+ by telephone between the 25th – 30th January 2020.
- / A random digit dial (RDD) method is used, with a mixture of mobile and landline sample, to ensure a random selection process of households to be included with 98% coverage – this also ensures that ex-directory households are covered.
- / Interviews are conducted across the country and the results weighted to the profile of all adults.
- / A further past vote weighting is included that takes the recall for how people voted in the last election, compares this to the actual results and weights the data between the two.
- / Vote intention results are weighted based on turnout, including both how likely each respondent is to actually go and vote, as well as whether or not they voted in the last general election.
- / In all respects the poll was completed to the opinion polling guidelines set out by both ESOMAR and AIMRO.



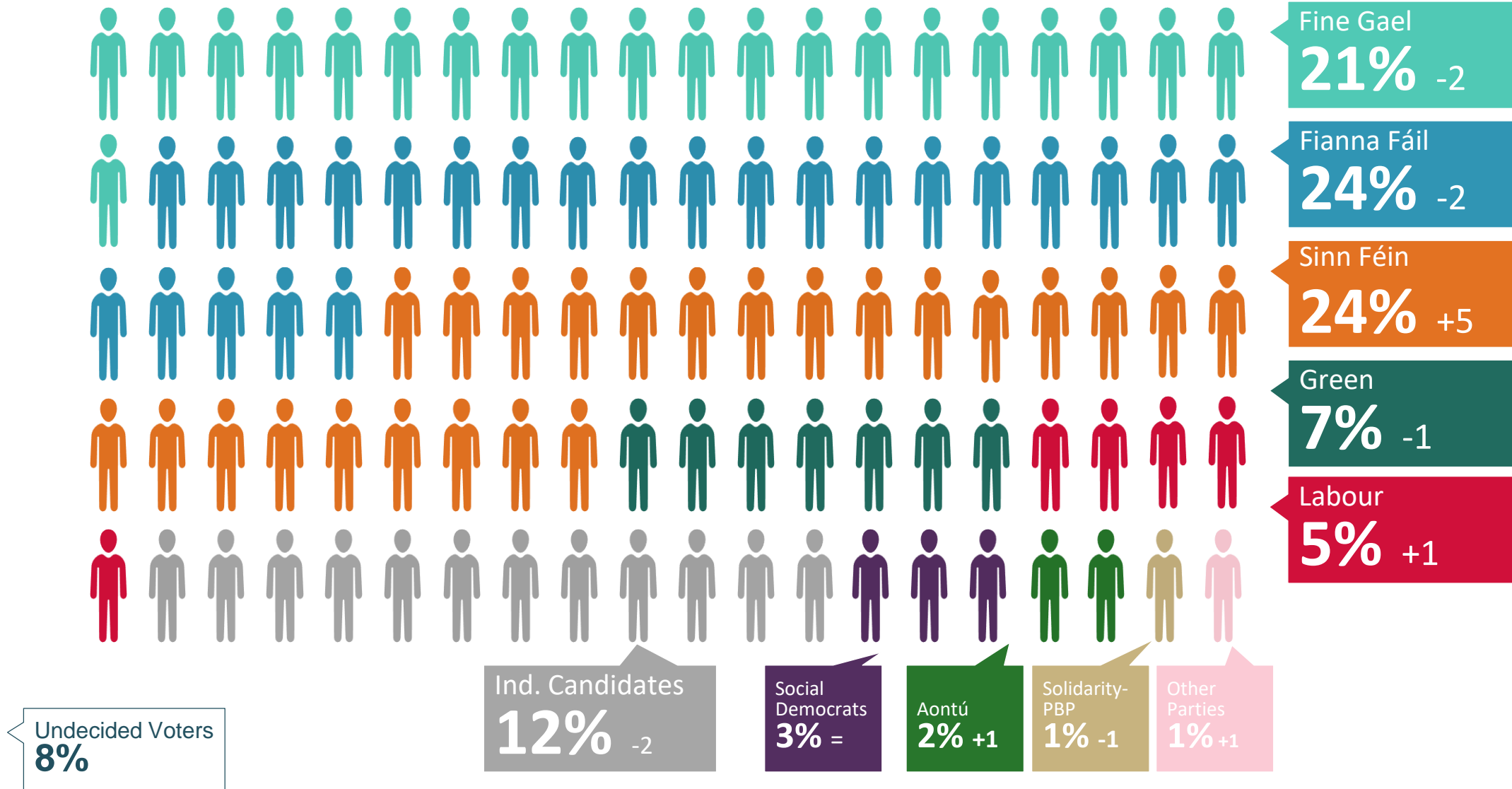


General Election

First Preference Vote Intention – 2nd February 2020

If the general election was tomorrow which party or independent candidate do you think you would give your first preference vote to? (Past vote weighted)

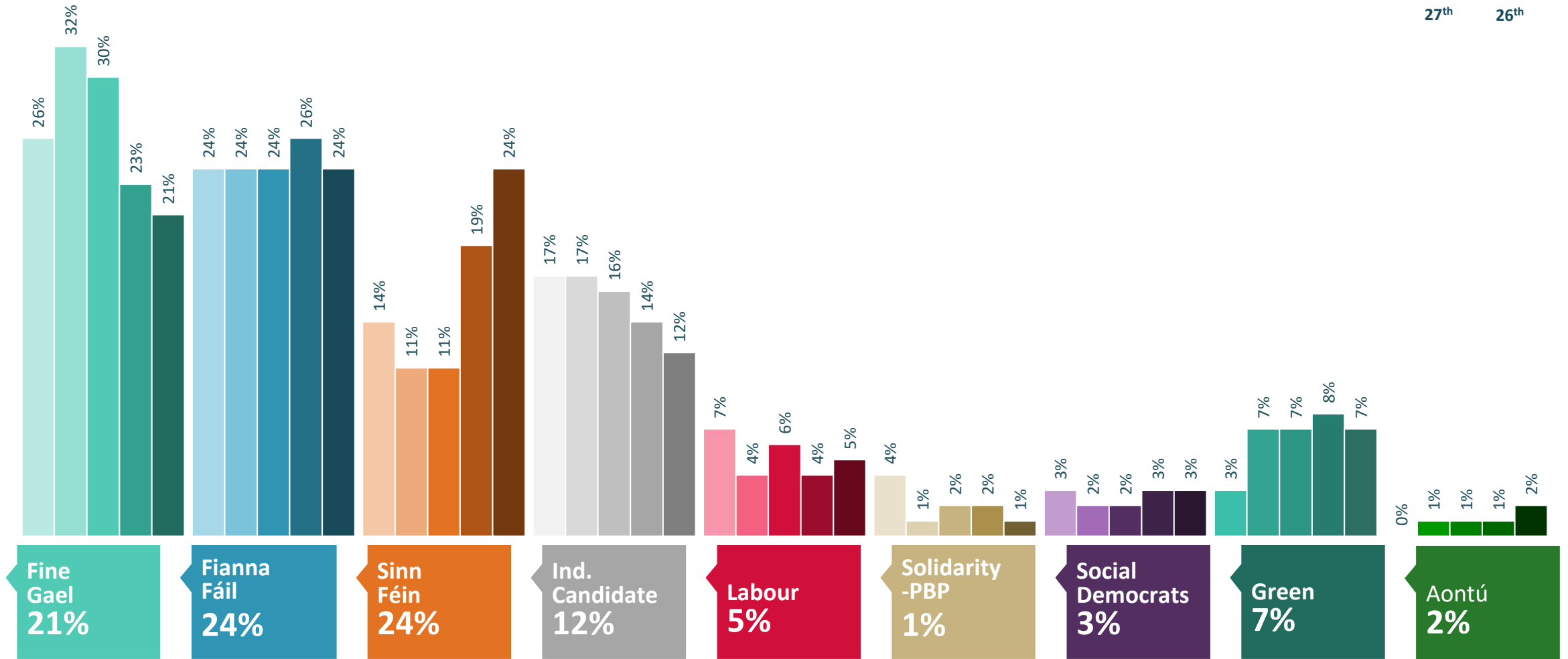
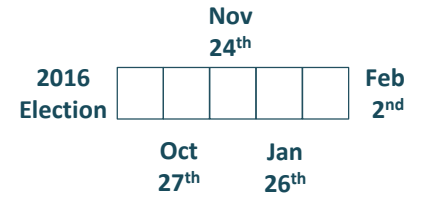
(Base: All adults 18+ who will vote)



First Preference Vote Intention – 2nd February 2020

If the general election was tomorrow which party or independent candidate do you think you would give your first preference vote to? (Past vote weighted)

(Base: All adults 18+ who will vote)



Other Parties
1%



Party 1st Preference Vote Intention X Demographics

If the general election was tomorrow which party or independent candidate do you think you would give your first preference vote to? (Past vote weighted)

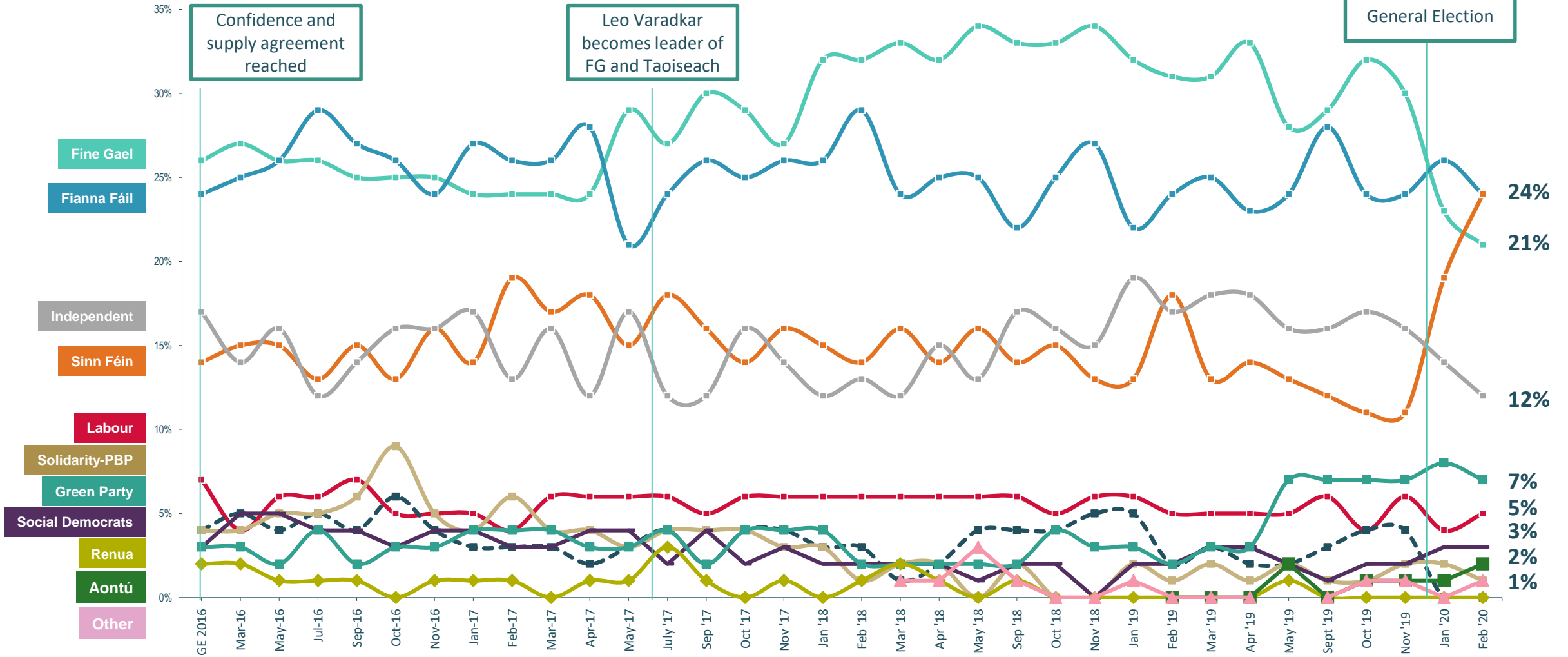
Note: Results on sub sample of the population are based on a much smaller sample size per group, and as such have a much higher margin of error. The results should therefore be treated with caution

February 2020	Gender		Age			Social Class			Region				
	Total	Male	Female	18-34	35-54	55+	ABC1	C2DE	F	Dublin	Rest of Leinster	Munster	Conn/ Ulster
Fianna Fáil	24%	24%	24%	18%	19%	32%	22%	23%	48%	19%	26%	27%	23%
Sinn Fein	24%	27%	20%	35%	29%	11%	19%	29%	11%	27%	20%	21%	29%
Fine Gael	21%	20%	22%	15%	18%	27%	22%	18%	32%	19%	25%	18%	20%
Independents	12%	11%	13%	8%	14%	13%	12%	14%	4%	9%	8%	16%	18%
The Green Party	7%	5%	10%	12%	7%	5%	9%	6%	4%	14%	5%	6%	2%
Labour	5%	5%	5%	4%	5%	6%	6%	5%	0	5%	6%	7%	1%
Social Democrats	3%	2%	3%	4%	3%	1%	3%	2%	0	3%	4%	0	4%
Aontú	2%	3%	2%	1%	2%	4%	5%	1%	0	<1%	3%	4%	2%
Solidarity - People Before Profit	1%	1%	1%	2%	2%	1%	1%	1%	1%	3%	1%	1%	1%
Other Party	1%	2%	0	1%	1%	0	1%	1%	0	1%	2%	0	0

First Preference Vote Intention – Since GE 2016

If the general election was tomorrow which party or independent candidate do you think you would give your first preference vote to? (Past vote weighted)

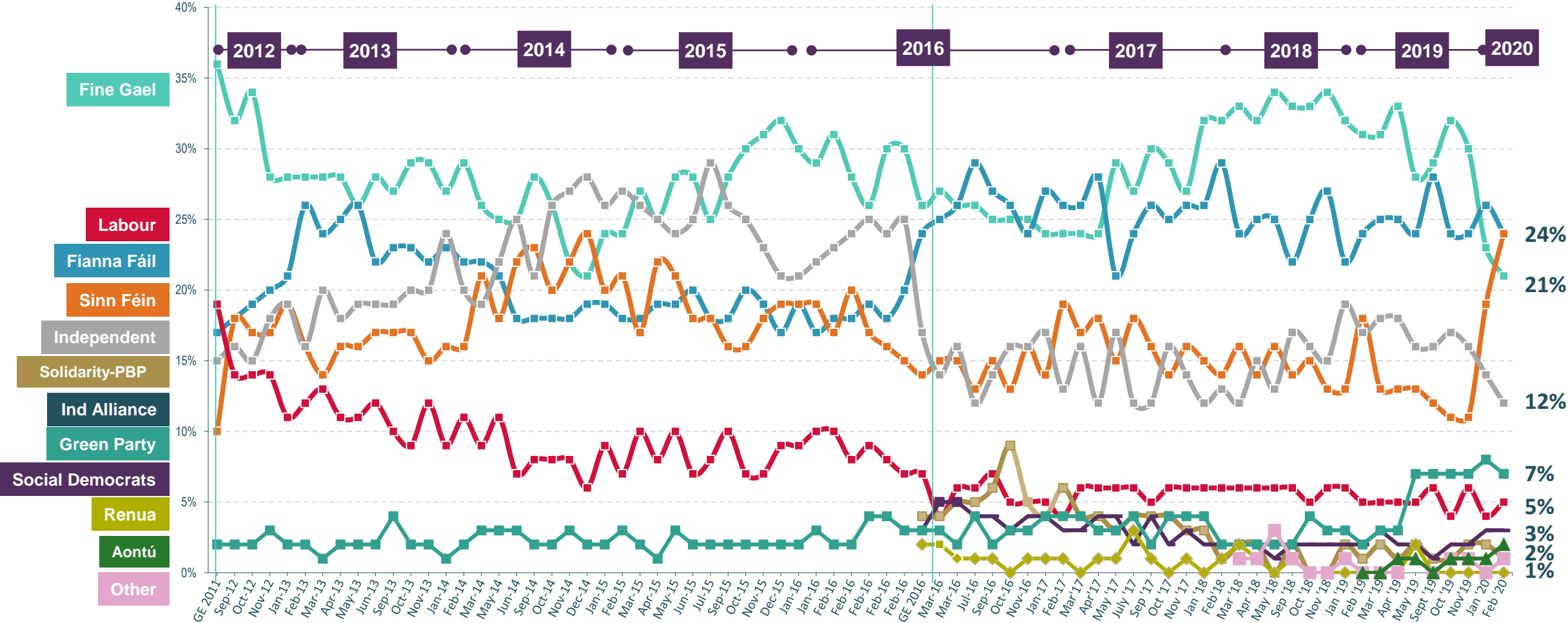
(Base: All adults 18+ who will vote)



First Preference Vote Intention – 2012-2020

If the general election was tomorrow which party or independent candidate do you think you would give your first preference vote to? (Past vote weighted)

(Base: All adults 18+ who will vote)

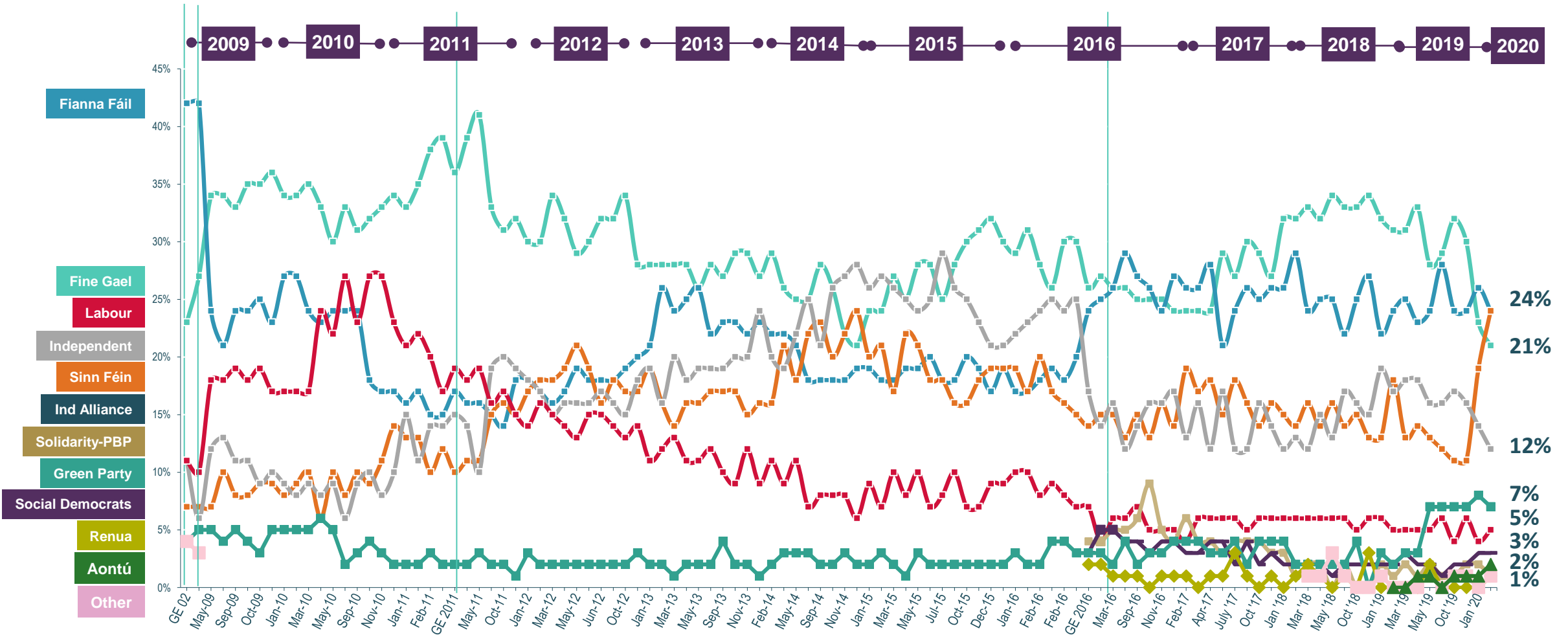


Note; From GE 2016 Onwards, 'Independents/Others' split out to show Solidarity-PBP, Social Democrats & Renua separately

First Preference Vote Intention – 2009 to 2020

If the general election was tomorrow which party or independent candidate do you think you would give your first preference vote to? (Past vote weighted)

(Base: All adults 18+ who will vote)



Note; From GE 2016 Onwards, 'Independents/Others' split out to show Solidarity-PBP, Social Democrats & Renua separately

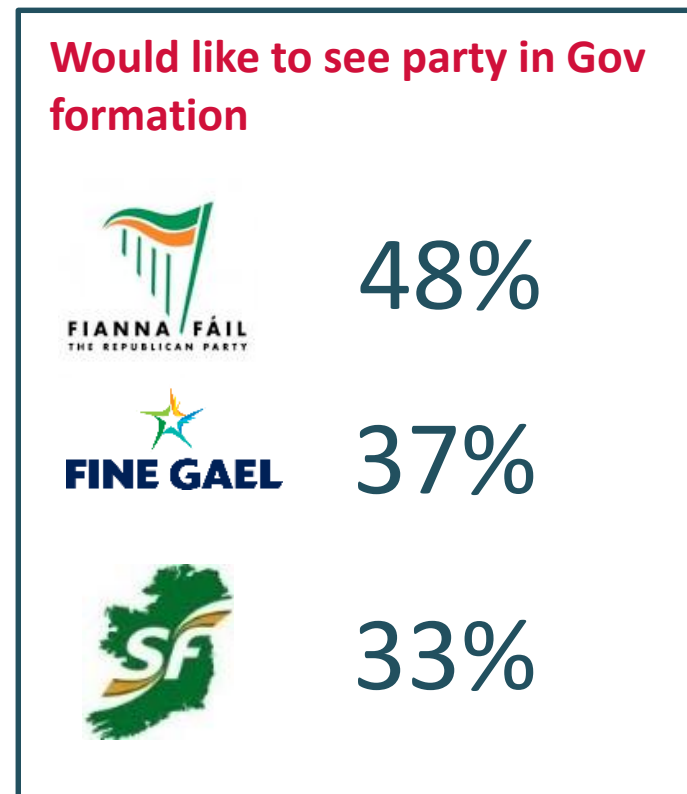
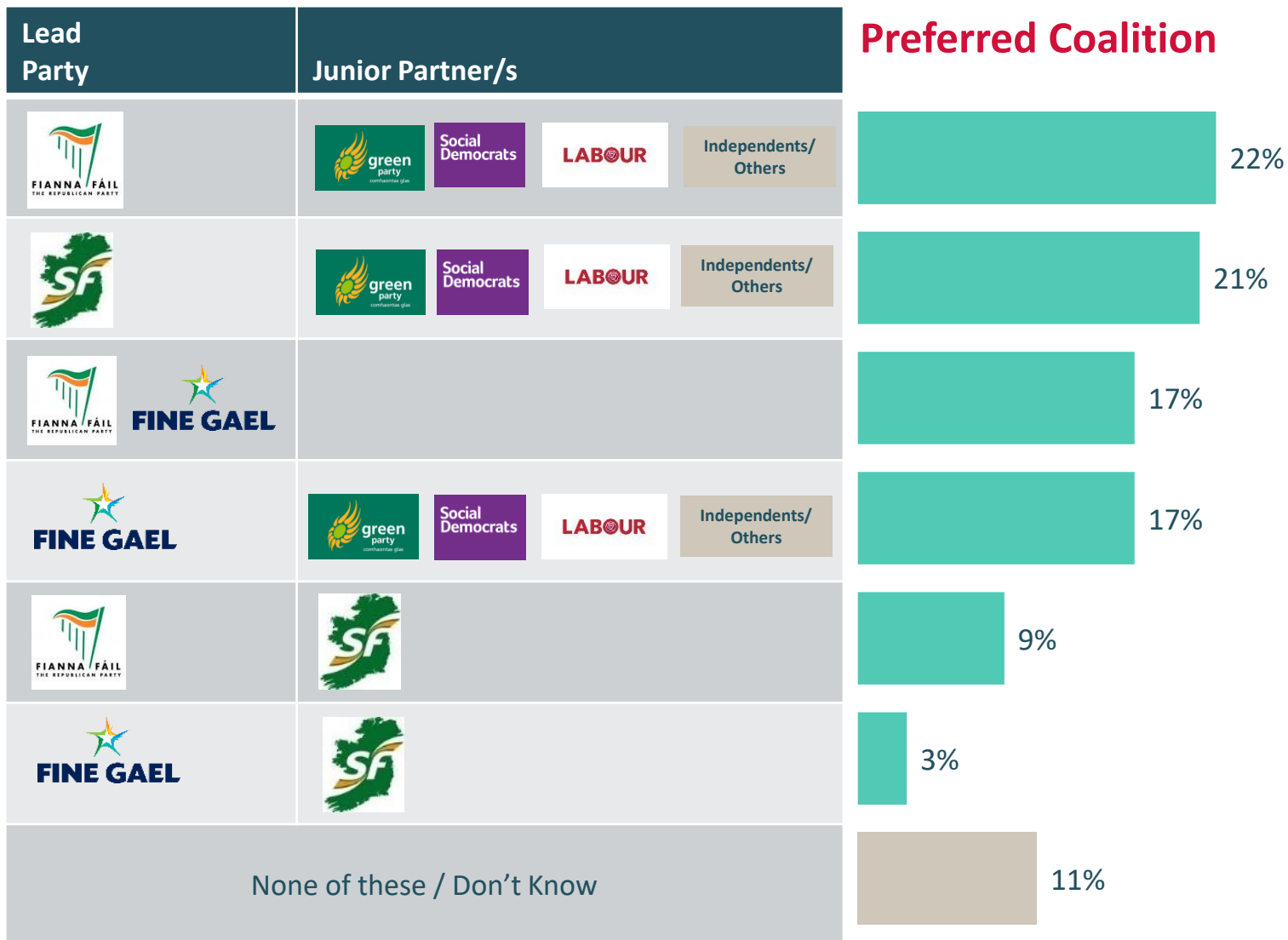


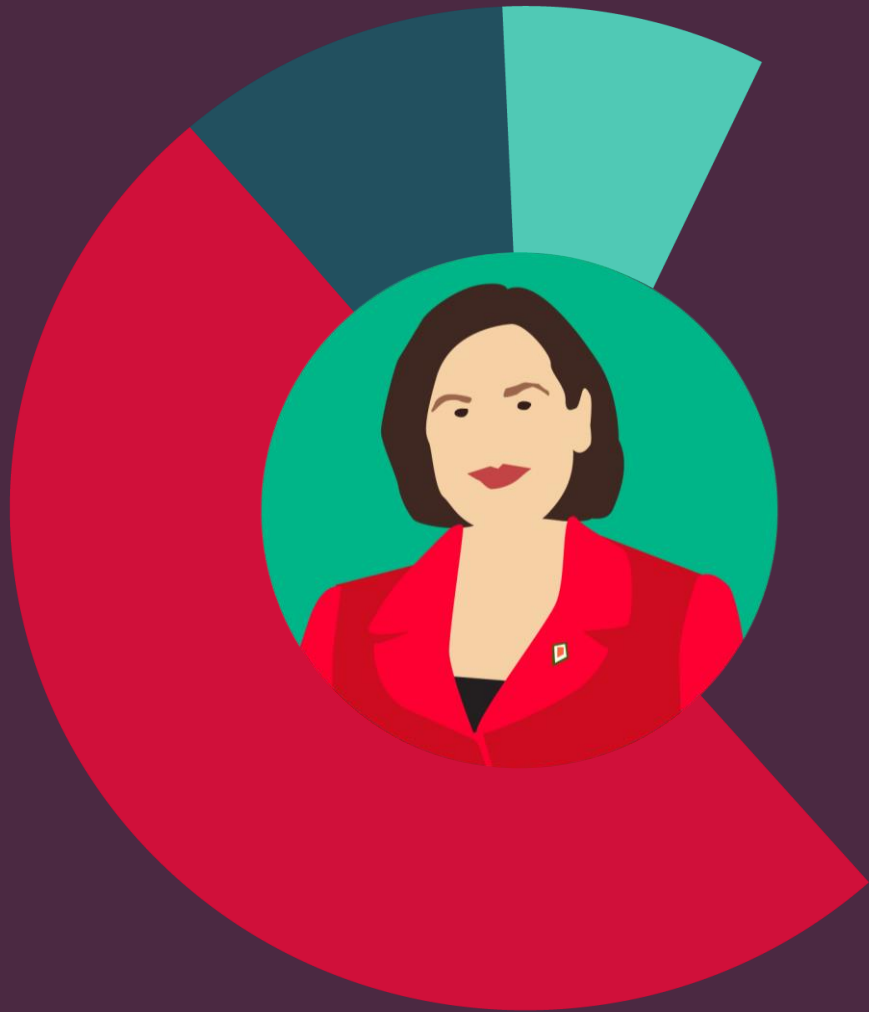
Preferred Coalitions

What Coalition do Voters Want to See – Feb 2020

Q. It is likely that a coalition of parties will be required to form a government after the next election. Can you tell me which of the following possible coalition you think will be best for Ireland?

(Base: All likely voters, n = 813)



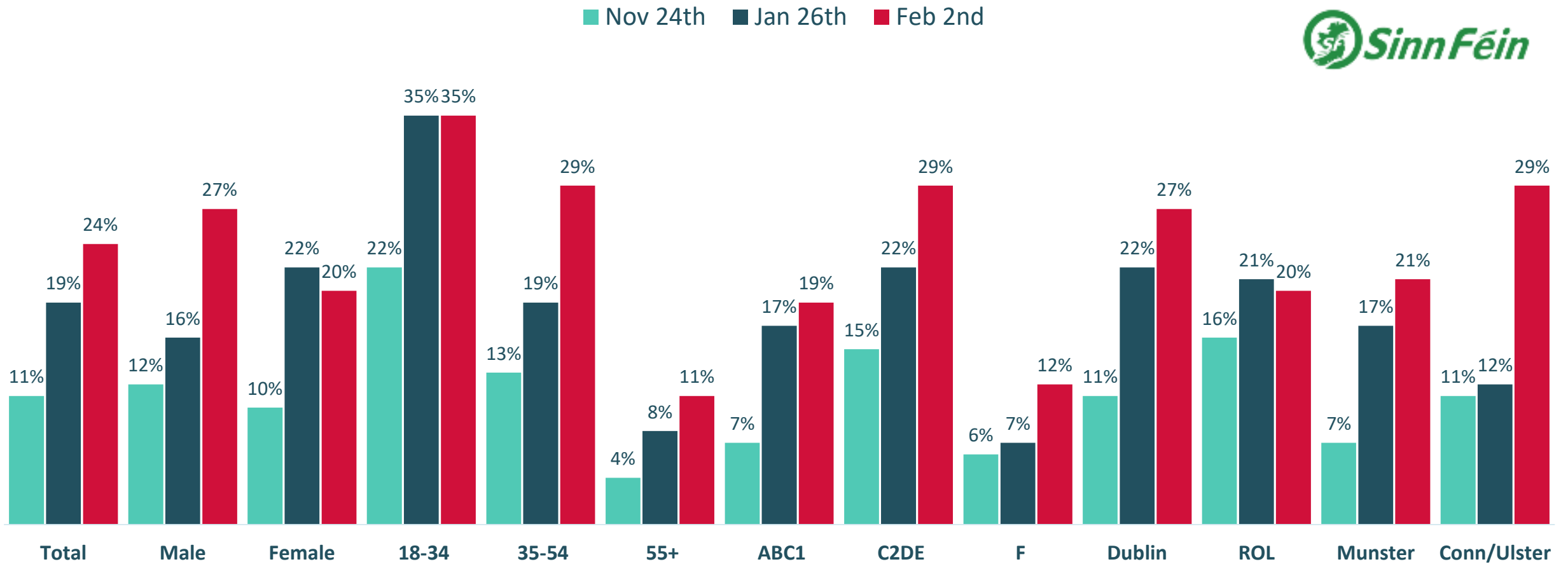


Why are Voters Moving to Sinn Féin?

First Preference Vote Intention – Sinn Féin

If the general election was tomorrow which party or independent candidate do you think you would give your first preference vote to? (Past vote weighted)

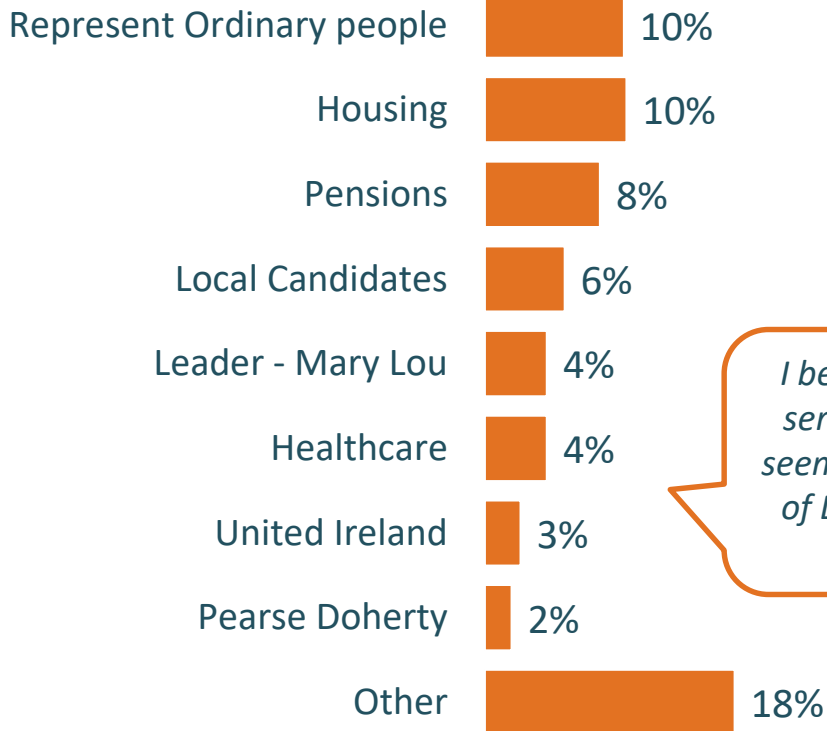
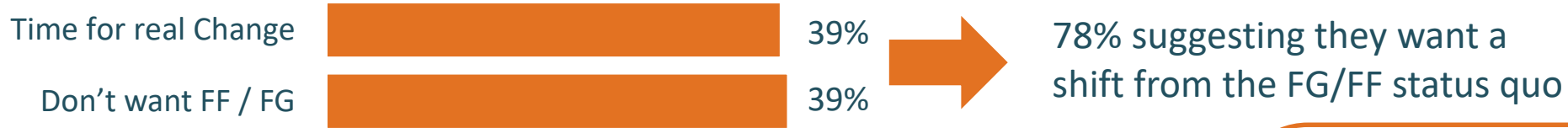
Note: Results on sub sample of the population are based on a much smaller sample size per group, and as such have a much higher margin of error. The results should therefore be treated with caution



Reasons for moving to Sinn Féin

Q. Why are you thinking that you will give that party a first preference vote in the upcoming general election? What other reason do you have for choosing that party this time?

Base: All those giving 1st preference to Sinn Féin that didn't in GE2016



The country needs a change of direction and attitude in terms of leadership. We've had FF and FG at the helm for years and nothing is improving

Time for a major change in policies on Homelessness, Health and austerity which present government are incapable of dealing with. The fact that they are refusing to consider Sinn Fein as capable to be in Government is absolutely disgusting and an insult to those who are prepared to vote Sinn Fein.

They seem to be the only candidates that really want to change

Their stance on the pension issue

I believe FF/FG have together ruined the health service and housing situation in this country. It seems to me FG do not care about people outside of Dublin or the ordinary people of Ireland. It is time to give someone else a chance.

Their spokespeople in the Dáil are very impressive and seem to know what they are talking about and seem to be in touch with the ordinary people not posh detached as we have at present

FF/FG have broken a lot of promises during their tenure. I'm moved to give SF a chance at this stage. Although I don't agree with their stances on some issues, Pearse Doherty strikes me as an alternative worth hearing more from.

**THANK
YOU**

REDC